



Public Document Pack

**Havering**  
LONDON BOROUGH

# **COUNCIL MEETING**

**7.30 pm Wednesday, 21 September 2011  
AT Council Chamber - Town Hall**

**Members of the Council of the London Borough of Havering are hereby summoned to attend a meeting of the Council at the time and place indicated for the transaction of the following business**

**Acting Assistant  
Chief Executive**

**For information about the meeting please contact:  
Ian Buckmaster Tel: 01708 432431  
[ian.buckmaster@havering.gov.uk](mailto:ian.buckmaster@havering.gov.uk)**



**Please note that this meeting will be webcast.**

**Members of the public who do not wish to appear  
in the webcast will be able to sit in the balcony,  
which is not in camera range.**

## AGENDA

**1 PRAYERS**

**2 APOLOGIES FOR ABSENCE**

**3 MINUTES** (Pages 1 - 20)

To sign as a true record the minutes of the Meeting of the Council held on 20 July 2011

**4 DECLARATION OF INTERESTS**

Members are invited to declare any interests in any of the items on the agenda at this point of the meeting.

*Members may still declare an interest in an item at any time prior to the consideration of the matter.*

**5 ANNOUNCEMENTS BY THE MAYOR, BY THE LEADER OF THE COUNCIL OR BY THE CHIEF EXECUTIVE**

**6 PETITIONS**

Councillors Andrew Curtin and Damian White have each given notice of an intention to present a petition.

**7 AMENDMENTS TO THE REGULATIONS FOR THE CEMETERIES PROVIDED BY THE LONDON BOROUGH OF HAVERING** (Pages 21 - 24)

To consider a report of the Cabinet

**Note:** the deadline for Members' questions about, or amendments to, the attached report is midnight, Monday 19 September 2011

**8 AMENDMENTS TO THE CONSTITUTION** (Pages 25 - 26)

To consider a report of the Governance Committee

**Note:** the deadline for Members' questions about, or amendments to, the attached report is midnight, Monday 19 September 2011

**9 AUTHORISATION OF STATUTORY OFFICERS** (Pages 27 - 28)

To consider a report of the Chief Executive

**Note:** the deadline for Members' questions about, or amendments to, the attached report is midnight, Monday 19 September 2011

**10 ANNUAL REPORTS OF THE MEMBER CHAMPIONS** (Pages 29 - 98)

To receive the reports

**Note:** the deadline for Members' questions about, or amendments to, any of the attached reports is midnight, Monday 19 September 2011

**11 MEMBERS' QUESTIONS** (Pages 99 - 104)

**12 MOTIONS FOR DEBATE** (Pages 105 - 106)

This page is intentionally left blank





**MINUTES OF A MEETING OF THE COUNCIL OF THE  
LONDON BOROUGH OF HAVERING  
Havering Town Hall, Romford  
20 July 2011 (7.30pm – 11pm)**

**Present:** The Mayor (Councillor Melvin Wallace) in the Chair

**Councillors:** Councillors June Alexander, Michael Armstrong, Clarence Barrett, Robert Benham, Becky Bennett, Sandra Binion, Jeff Brace, Denis Breading, Wendy Brice-Thompson, Dennis Bull, Andrew Curtin, Keith Darvill, Nic Dodin, David Durant, Brian Eagling, Ted Eden, Roger Evans, Gillian Ford, Georgina Galpin, Peter Gardner, Linda Hawthorn, Lesley Kelly, Steven Kelly, Pam Light, Paul McGeary, Robby Misir, Ray Morgon, John Mylod, Eric Munday, Pat Murray, Barry Oddy, Denis O'Flynn, Fred Osborne, Ron Ower, Gary Pain, Roger Ramsey, Paul Rochford, Geoffrey Starns, Billy Taylor, Barry Tebbutt, Frederick Thompson, Lynden Thorpe, Linda Trew, Jeffery Tucker, Linda Van den Hende, Keith Wells, Damian White, Michael White and John Wood

Approximately 45 Members' guests and members of the public and a representative of the press were also present.

Apologies were received for the absence of Councillors Michael Deon Burton, Osman Dervish, Mark Logan and Barbara Matthews

The Mayor advised Members and the public of action to be taken in the event of emergency evacuation of the Town Hall becoming necessary.

Father Roderick Hingley of St Alban Protomartyr, Romford opened the meeting with prayers.

The meeting closed with the singing of the National Anthem.

## 18 **MINUTES**

The Minutes of the previous meeting were before the Council for approval.

### **Procedural motion on behalf of the Independent Residents' Group**

#### **Page 12C, Minute 17: Motions for Debate**

To give an accurate account of events, amend the last sentence in the second paragraph by adding the words in bold, so that it reads:

"Following exchanges and interventions by other Members **and an unconstitutional instruction from the Mayor ordering Councillor Jeffrey Tucker to leave the Chamber**, the Members of the Independent Residents Group then retired from the meeting".

In accordance with Council Procedural Rule 12.1(a), the procedural motion was put to the vote without debate and was **LOST** by 2 votes to 32 (see division 1).

The minutes as submitted were **AGREED** and it was **RESOLVED**:

**That the minutes of the Annual Meeting of the Council held on 25 May 2011 be signed as a true record.**

19 **DECLARATIONS OF INTEREST**

Councillor Paul McGeary declared a personal interest in the course of Members' Questions (see minute 24 below).

20 **ANNOUNCEMENTS**

The Mayor's Announcements are attached as **Appendix 1 to these minutes**.

21 **PETITIONS**

Pursuant to Council Procedure Rule 23, petitions were presented as follows, by Councillors:

- |                      |                                                                                                                            |
|----------------------|----------------------------------------------------------------------------------------------------------------------------|
| Denis Breading -     | From local residents, supporting the purchase of the Stubbers Outdoor Pursuits Centre by its current lessees               |
| Gillian Ford -       | From local residents, supporting the purchase of the Stubbers Outdoor Pursuits Centre by its current lessees               |
| Clarence Barrett -   | From local residents, expressing concern about the poor condition of the carriageway surface of Laburnham Gardens, Cranham |
| Frederick Thompson - | From local residents, seeking the gating of an alleyway at the corner of Kyme Road and Dymoke Road                         |

Ron Ower - From users of Romford Ice Rink,  
opposing its closure

It was **NOTED** that each petition would be passed to Democratic Services for attention in accordance with the Petitions Scheme.

## 22 **CAPITAL PROGRAMME – adjustment**

There was before the Council a report of the Cabinet concerning the need for an adjustment to the approved capital programme to meet the funding requirements for the proposed new Romford Leisure Centre.

A question relating to the proposal was asked and answered. No amendment was proposed and the recommendations of the Cabinet were **ADOPTED** without debate or division. It was, accordingly, **RESOLVED**:

**That the Council's Capital Programme BE AMENDED to include:**

- **an additional scheme for the Romford Leisure development with an estimated spend budget of £24.774m**
- **associated funding for this scheme from a combination of capital receipts and application of funds from the Strategic Reserve, totalling £22.7m**
- **application of further funds of around £2m from within the Corporate Transformation Fund and/or the Corporate Contingency Fund, or from the use of prudential borrowing, to bridge the funding gap.**

## 23 **ANNUAL REPORTS OF COMMITTEES ETC**

Council received and considered the Annual Reports of the following:

Children & Learning Overview & Scrutiny Committee

Crime & Disorder Committee

Environment Overview & Scrutiny Committee

Health Overview & Scrutiny Committee

Individuals Overview & Scrutiny Committee

Partnerships Overview & Scrutiny Committee

Towns & Communities Overview & Scrutiny Committee

Value Overview & Scrutiny Committee

Audit Committee

Pensions Committee

Member Champion for Standards (on behalf of the Standards Committee)

Standing Advisory Committee for Religious Education

Each Annual Report was **ADOPTED** without debate or division.

**RESOLVED:**

**That the Annual Reports as listed be approved.**

**24 MEMBERS' QUESTIONS**

8 questions were asked and replies given.

The texts of those questions and their answers, together with those not asked orally, are set out in **Appendix 2 to these minutes**.

**25 YOUTH SERVICES CUTS**

**Motion on behalf the Labour Group**

This Council opposes the Administrations cuts to its universal youth services leading to the closure of facilities for young people and the cessation funding for the Duke of Edinburgh's Award Scheme in Havering.

This Council recognises that young people are already bearing an unfair burden of the public expenditure cuts imposed by the Conservative led Coalition Government including a significant reduction in Education Maintenance Allowance and a steep rise in University Tuition Fees and calls upon the Administration to reconsider its proposals in order to mitigate the impact on young people of both central Government policies and the proposed cuts in Havering's Youth Services.

**1 Amendment on behalf of the Independent Residents' Group**

**Amend** to read:

This Council calls upon the Administration to reconsider its damaging cuts to its universal youth services and to contact all Local Authority Council Leaders and Chief Executives in England to seek support for a reform of the biased local government formula grant funding to ensure local councils (on an equitable basis) can provide the youth and public services that local residents so richly deserve.

## **2 Amendment on behalf of the Administration**

**Amend** to read:

This Council recognises that all departments within Havering Council, including the Youth Service, are required to make efficiency savings to pay for the mess left to the UK economy by the previous Labour Government.

Following debate, the Independent Residents' Group amendment was **LOST** by 2 votes to 36 (see division 2) and the Administration amendment was **CARRIED** by 31 votes to 7 (see division 3). The Administration amendment was then carried as the substantive motion by 31 votes to 7 (see division 4) and it was **RESOLVED** that:

**This Council recognises that all departments within Havering Council, including the Youth Service, are required to make efficiency savings to pay for the mess left to the UK economy by the previous Labour Government.**

## 26 **OWNERSHIP OF THE STUBBERS CENTRE, UPMINSTER**

### **Motion on behalf of the Residents' Group**

This Council agrees that the Stubbers Centre, Upminster, provides much needed and high quality activities to young people from in and around Havering and that any subsequent sale or change of ownership be conditional on the activity centre being able to continue in its current capacity for future generations to enjoy.

### **1 Amendment on behalf of the Independent Residents' Group**

**Amend** to read:

The popular Stubbers Outdoor Adventure Centre provides high quality activities for young people that builds character and independence and offers a fresh air alternative to video games.

Therefore this Council resolves not to sell Stubbers because any money raised will not cover the real cost to the community of losing this excellent facility.

### **2 Amendment on behalf of the Administration**

**Amend** to read:

This Council, reaffirming the unchallenged Executive Decision of the 19<sup>th</sup> January 2011, notes with approval that any decisions as to the future of Stubbers Centre will continue to be taken with full consideration of the benefits of the use of the site by Havering residents.

Following debate, the Independent Residents' Group amendment was **LOST** by 3 votes to 36 (see division 5) and the Administration amendment was **CARRIED** by 37 votes to 12 (see division 6). The Administration amendment was then carried as the substantive motion by 31 votes to 18 (see division 7) and it was **RESOLVED that:**

**This Council, reaffirming the unchallenged Executive Decision of the 19<sup>th</sup> January 2011, notes with approval that any decisions as to the future of Stubbers Centre will continue to be taken with full consideration of the benefits of the use of the site by Havering residents.**

---

Mayor  
21 September 2011

**Note:** the record of the voting divisions is attached as  
**Appendix 3 to these minutes.**

**ANNOUNCEMENTS BY MAYOR**

May I begin by telling you of the great pleasure I had in welcoming the Bishop of Chelmsford, The Right Reverend Stephen Cottrell, to the Council. It was my first official appointment as the Mayor of Havering and Bishop Stephen's visit was the perfect start to my year in office.

I would now like to congratulate everyone involved in the Council's successful £1.7million Heritage Lottery funding bid, to help restore Raphael Park to its former glory. A great deal of work went into the bid which was put together with the help of residents and volunteers from the Friends of Raphael Park.

Congratulations are also in order for The Havering Safe and Sound Group which has received a top award from the Association of Town Centre Management Awards. The award for Developing the Evening and Night-time Economy recognised the excellent teamwork of the Council, the police, licensees, door supervisors, taxi marshals and street pastors to make Romford a safer and more pleasant place to enjoy a night out.

Also in the award spotlight is our Trading Standards team. I was privileged to be at the presentation of an award by the Anti-Counterfeiting Group which named the team as the best department in the country in their annual awards.

The team was given the 2011 Department Award for Excellence for 'outstanding work' in Operation Augusta – the investigation and successful prosecution of a criminal network engaged in a multi-million pound fake golf club scam on eBay.

And speaking of winners – our Havering Youth Games team did incredibly well to secure medals in a number of sports at the 2011 London Youth Games. We came seventh overall and were extremely good sports with an exemplary performance on and off the pitches.

I can't tell you enough how proud I am of our school children and students. No matter how many events I attend their talent, dedication and sheer hard work never fails to impress.

Pupils at the Primary School Festival of Music and the Speak out Challenge gave exceptional performances.

Staying with music, once again the performance by the Westminster Philharmonic was outstanding at the Langton's Summer Concert – and a just reward for the 2,000 or so people who braved the weather.

I was also one of the many here who celebrated Armed Forces Day. It was a great way for us to show our appreciation of the servicemen and women who serve our country. It was a very proud day for us all and I had the added honour of presenting awards of meritorious service to local people who had given distinguished service to the borough. Well done to everyone involved in these events for making them such a success.

This year is also the 40<sup>th</sup> Anniversary of our town twinning with Ludwigshafen. The relationship between us is long and meaningful. It represents the hopes of a post-war generation and has grown over time, bringing us together with a greater understanding of our cultures, through education, business or friendship... and long may it continue.

**MEMBERS' QUESTIONS AND ANSWERS**

**Note:** Questions 1 to 8 were answered at the meeting. In accordance with Council Procedure Rule 10.6(a); the remainder were treated as if put for written answer

**1 RECORD OF EXPENDITURE IN EXCESS OF £500****To the Leader of the Council (Councillor Michael White)**

By Councillor Clarence Barrett

Would the Leader explain why the March 2011 items of expenditure in excess of £500 still does not appear on the Council website (or why the delay if it has been updated by the time of this Council meeting)?

**Answer:**

The figures do now appear on the website. The delay was due to a combination of new systems, and technical and administrative difficulties.

In response to a supplementary question, the Leader of the Council confirmed that he was unhappy that there had been a delay in publishing the March figures but pointed out that all other months' figures were there.

**2 ST. GEORGE'S HOSPITAL****To the Cabinet Member for Individuals (Councillor Steven Kelly)**

By Councillor Paul McGeary

*During the course of the asking and answering of this Question, Councillor Paul McGeary declared a personal interest (so far as necessary) as an employee of the National Health Service.*

Have Havering PCT made any recent decisions about the future of St George's Hospital?

**Answer:**

No

In response to a supplementary question, the Cabinet Member pointed out that Havering PCT was under no obligation to advise the Council of any decision it might make about its property.

**3 GUYSFIELD DRIVE - HOSTEL****To the Cabinet Member for Housing (Councillor Lesley Kelly)**

By Councillor Michael Deon Burton

Guysfield Drive is a quiet residential turning and is the wrong place to put a large mixed use hostel.

Can the Administration confirm that any structural changes, change of use or alterations to Will Perrin Court will require approval by the Regulatory Services Committee?

**Answer:**

The Administration notes the views expressed on the proposed use of the former Will Perrin Court in Guysfield Drive as temporary hostel accommodation. The Administration would like to point out



that the Council's current temporary accommodation schemes are in established residential areas and have operated for many years without causing disturbances to neighbours.

The Administration can confirm that a change of use planning application is required and will be considered by the Regulatory Service Committee. Alterations to the inside of the building would not normally require a planning application, however, floor plans relating to the proposed use will be necessary in this instance in support of the change of use application. Statutory consultation will be carried out in the usual way by planners.

In response to a supplementary question, the Cabinet Member confirmed that, so far as she was aware, no works were currently under way at the premises.

#### 4 TOWN TWINNING – BENEFITS FOR RESIDENTS

##### To the Leader of the Council (Councillor Michael White)

By Councillor Ray Morgon

Would the Leader confirm the costs of twinning with Ludwigshafen and Hesdin over the past five years, and what tangible benefits for Havering residents can be demonstrated by this relationship?

##### **Answer:**

Havering twinned with Ludwigshafen in 1971 and Hesdin in France in 2000. This is not just a relationship between the Council and its twin towns – it is also a relationship between the three communities and its twinning associations which has, over the years, involved hundreds of people from all three towns and from a huge range of organisations, associations and clubs - including schools, churches, sports clubs, marching bands, and many others.

The resulting exchanges and ties have helped create friendships and mutually beneficial relationships, as well as fostering understanding and tolerance by giving people from participating towns the chance to learn about another culture, language, history and way of life.

Maise Whitelock, the Secretary of the Havering Twinning Association and a former Mayor has said that it is “essential to keep our ties with our twin towns” and that twinning has been a key part in the post-war peace that Europe has enjoyed.

The cost to the Council, for Town Twinning is as follows,

2011/2012	£1,110
2010/2011	£3,990
2009/2010	£5,250
2008/2009	£4,850
2007/2008	£3,160

In response to a supplementary question, the Leader of the Council reaffirmed that the Town Twinning arrangements were very popular and the expenditure incurred was very modest. Immense benefits flowed from the interchanges between individuals and schools.

#### 5 CONSIDERATION BY OVERVIEW & SCRUTINY COMMITTEES OF REQUISITIONED DECISIONS

##### To the Leader of the Council (Councillor Michael White)

By Councillor Keith Darvill

What steps will the Administration take to avoid clashes of overview and scrutiny meetings dealing with requisitions of Cabinet decisions?

**Answer:**

I assume the Member is referring to the recent clash of commitments between the scheduled Governance Committee and Towns & Communities Overview & Scrutiny Committee and the special meeting of the Children & Learning Overview & Scrutiny Committee.

This arose because two decisions made by Cabinet at its June meeting were requisitioned.

When a decision is requisitioned, a balance must be struck between the rights of the requisitioners (and others) to scrutinise the decision in question, and the right of the Administration to take forward the executive business of the Council. The aim is, therefore, so far as practicable to arrange for an early meeting of the relevant OSC so that, should the requisition be upheld, the Cabinet can reconsider the matter at its next meeting.

As Cabinet meets monthly, and there are legal constraints about the availability of reports for the public in advance of any meeting, it is inevitable that OSC meetings will have to be arranged to a fairly tight timetable.

On this occasion, as the Towns & Communities OSC had a scheduled meeting on 5 July, the requisition was placed on its agenda. A special meeting of the Children and Learning OSC had to be convened; officers consulted the Chairman, who decided on 5 July: I understand that she had another commitment on 6 July.

As the Cabinet meeting was due on 13 July, for practical reasons associated with the Cabinet's agenda, the meetings of the OSCs had to take place on either 5 or 6 July.

It was unfortunate that, for entirely separate reasons, the Governance Committee was also meeting on 5 July, a day earlier than usual.

I appreciate that, for the smaller Groups, this caused particular problems. I would remind the questioner, however, that the Council has a "substitute" rule for precisely this sort of reason.

In response to a supplementary question, the Leader of the Council accepted that it was proper that all concerned should be able to attend Overview & Scrutiny Committees when they were considering requisitions. The clashes on the occasion referred to had arisen as the result of a particular set of circumstances, which were not likely to be repeated. Arrangements for convening special or additional meetings generally worked well and it was unlikely that staff would be able to find a date convenient to everyone.

**6      ARNOLD'S FIELD, LAUNDERS LANE, RAINHAM – WASTE DUMPING**

**To the Cabinet Member for Individuals (Councillor Steven Kelly)**

By Councillor Jeffrey Tucker

The situation at Arnold's Field landfill site in Launders Lane Rainham is a disgrace. The earth is being piled higher and higher to the sides to enable more waste to be dumped in the middle and there are real fears that this is toxic waste, because of the criminal activities already uncovered at the site.

What action is being taken to remove the present operators from Arnold's Field?

**Answer:**

The Council is working with the Environment Agency to establish whether there are any new material breaches of planning and/or environmental controls for which there is sufficient evidence to bring formal action. Material evidence, capable of withstanding legal scrutiny, is needed before this Council could seek prosecution of planning enforcement notices which are in place and which were upheld on appeal. The Environment Agency too would require substantive evidence in order to support any action brought under Environmental legislation including against the dumping of waste material.

The Council's planning service has reported to the Environment Agency allegations received from the public about dumping of waste material including concerns that it could be toxic. People making allegations of waste dumping are being encouraged to report this direct to the Environment Agency for which they maintain a 24hr hot line number published on their website.

In response to a supplementary question, the Cabinet Member urged anyone who had concerns about possible illegal dumping to report them to the Environment Agencies – the more incidents were reported, the more likely it was that there would be an effective response. The Cabinet Member declined to comment on allegations of illegal conduct but reaffirmed that all possible action was being, or would be, taken to secure cessation of unauthorised activity on the site.

**7 PROPOSED ROMFORD LEISURE CENTRE**

**To the Leader of the Council (Councillor Michael White)**

By Councillor Clarence Barrett

Would the Leader please set out the results of the market research carried out to evaluate the demand in respect of the proposed Leisure Centre in Romford?

**Answer:**

Sport England have produced a facility planning model that shows that Romford (particularly west Romford) is deficient in swimming pools. The London Mayor has identified that there is a need for indoor community facilities such as sports halls and swimming pools in his draft Replacement London Plan.

Havering based swimming clubs have, over a long period of time, made it clear that Romford needs a new swimming pool, to ensure that there is more training time and to provide a competition venue for local and sub regional galas.

The existing ice rink facility is a very popular and well used facility (opening up to 16 hours per day); so there is an established demand for an ice rink in Romford. If the new ice rink is not built there is a danger that the current facility will require significant investment at some point in the next few years (estimated to be £500k- £1m).

Strategic Leisure Ltd have assessed the demand for a new leisure facility as part of the work they have done on the revenue projections.

In response to a supplementary question, the Cabinet Member confirmed that, not only was the project aspirational, there was clear demand for it, bolstered by the recognition of the need for it in the Mayor of London's Plan.

**8 DEVELOPMENT OF GARAGE SITES**

**To the Cabinet Member for Housing (Councillor Lesley Kelly)**

By Denis O'Flynn

When proposals for developing garage sites are being planned, what consideration is being given to the views of residents expressed through consultations in the recent past?

**Answer:**

When proposing to develop a garage site for an alternative use, considerable efforts are made to consult residents. In early 2009, residents neighbouring some 109 garage sites were written to regarding their potential future use. Only one-in-five residents responded. It could have been concluded that this showed the vast majority, some four-fifths, of residents had no particularly strong views on the future use of their nearby site, thus suggesting the Council could act with little or no further engagement with residents. The Council in fact decided to continue the dialogue with local people.

Following this consultation, development proposals on 25 garage sites were dropped. On the sites where housing development was proposed, residents were consulted earlier this year through the planning application process. In addition, the Housing Service and Homes in Havering wrote to residents who would be required to give up a garage tenancy and those sharing boundaries with the garage sites.

A number of important points have been learnt from residents' comments about the first phase of redevelopment and as a result the Housing Service and Homes in Havering colleagues have amended their consultative arrangements. Notably, the Housing Service has listened to residents' concerns that demolishing garages could lead to pressure on on-street parking in the locality. Where residents feel there is not enough alternative parking options in the area, the Housing Service now asks Highways colleagues to advise on extra parking bay provision. Already in one location, the disposal of a garage site with nine occupied garages has been offset by the widening of a nearby road to create space for around 20 cars to park.

Additionally, residents are now given three weeks' notice of our wish to terminate their garage tenancy, instead of just one week, and officers now pro-actively search for an alternative garage rather than the previous practice of putting the onus on the resident to contact Homes in Havering to find out about alternatives.

In response to a supplementary question, the Cabinet Member confirmed that planning permission was a pre-requisite to any work beginning.

**9 CLIMATE CHANGE TAXES – ITEMISATION ON COUNCIL TAX BILLS**

**To the Cabinet Member for Value (Councillor Roger Ramsey)**

By Councillor David Durant

Our Council Tax bills itemise payments to the Metropolitan Police and ELWA.

In the interests of transparency can the bills also itemise the cost of the climate change taxes that the Government has imposed on local councils?

**Answer:**

The contents of the Council Tax demand notice are nationally prescribed through regulations issued by the Secretary of State. These regulations specifically require the Council to show details of the presenting and levying bodies but do not include the provision to highlight additional issues such as the cost of the climate change taxes that the Government has imposed on local councils.

**10 USE OF TOWN CENTRE CCTV FOR PARKING ENFORCEMENT**

**To the Cabinet Member for Environment (Councillor Barry Tebbutt)**

By Councillor Linda Van den Hende

Would the Cabinet Member clarify whether CCTV cameras which operate in our Town Centres can be used for Parking Enforcement?

**Answer:**

Technically the cameras could be used for Parking Enforcement, however because the cameras were brought in under the provisos of the Crime and Disorder Act legally at the moment the council cannot. Applications will need to be made under the London Local Authority and Transport for London Act 2003 and the CCTV code and practice and operations manual changed. Notice will then need to be given to the public of where these cameras are placed.

11 **INVESTIGATION OF INTERNAL FRAUD AND THEFT**

**To the Cabinet Member for Value (Councillor Roger Ramsey)**

By Councillor Jeffrey Tucker

It has been brought to my attention that this Council has investigated more than 100 cases of internal fraud/theft and other allegations which has, on many occasions, resulted in sacking and disciplinary action against the Council staff involved. Why has this Council failed to involve the Police to investigate in any of these cases?

**Answer:**

Let me start by saying that this Council does not and will not tolerate fraud, theft or corruption amongst staff, or indeed, elected members. Where we have evidence of any criminal activity, we will refer the matter immediately to the police and let the police and the Crown Prosecution Service decide whether the matter should be put before the courts.

The first step is to see if that evidence exists. If any member of staff has a concern about fraud they can call a well-publicised whistle blowing hotline, or simply ask our Fraud and Special Investigations team to investigate. Members of the public can also refer issues to us.

Councillor Tucker is raising concerns linked to Audit Committee reports in May and December, that detailed 71 investigations by the team during a period covering more than one financial year. These were **not** 71 cases of fraud. They included a number of general investigations of our processes and well over 50 investigations into disciplinary matters such as excessive personal use of the internet during work time.

The remaining cases were all investigated thoroughly. No evidence of criminal activity or deliberate fraud was found – so they weren't referred to the police. But any evidence of mismanagement or broken rules led to disciplinary action – some of which resulted in resignations or dismissals. I would point out that we did refer cases to the police, both in the months preceding and following the period covered by these Audit reports.

12 **GERPINS LANE CIVIC AMENITY SITE – FLY-TIPPING**

**To the Cabinet Member for Environment (Councillor Barry Tebbutt)**

By Councillor Linda Van den Hende

Given the potential for an increase in fly-tipping due to the entry changes at Gerpins Lane tip, can the Cabinet Member please state how many mobile and covert CCTV cameras are available to StreetCare to catch and prosecute fly-tippers?

**Answer:**

There has been no discernible increase in fly-tipping in the vicinity of the Gerpins Lane Re-use and Recycle Centre since the change of entry conditions.

The Streetcare Enforcement Team have a total of 8 CCTV cameras available for different circumstances.

There are three overt 3G cameras which are used in urban situations and one remaining covert recorder for lanes, all of which are regularly used. The team also has one Wi-fi overt unit and one covert unit built into a sign.

13 **SUPPORT FOR MEMBERS OF THE ARMED FORCES****To the Leader of the Council (Councillor Michael White)**

By Councillor Michael Deon Burton

Following headlines such as 'Councils are backing the armed forces with a number of measures' and news that many Councils are reviewing their housing policies to fast track service personnel to the top of the waiting list, what are the LBH doing in support of these persons who can often be called upon to make the ultimate sacrifice?

**Answer:**

The Council very much values the work of our Armed Services as was demonstrated by Armed Forces Day and I would like to thank everyone in this Chamber who came along and supported that event. Regarding support for our forces, I am pleased to announce that we will be signing the Armed Forces Community Covenant in due course. This covenant will bring together in one place all of the Council's, the wider community's and other public sector bodies' support for our military and I would encourage everyone in this Chamber to support the initiative.

Specifically regarding housing policies, the Council already prioritises housing for ex-services personnel where it is clear that their service history has put them at a risk of homelessness. Furthermore, in anticipation of the Localism Bill passing into law, the Council is commencing a review its allocations scheme. This will include canvassing local opinion on what priority for social housing should be given to ex-services personnel.

14 **LIVING MAGAZINE – 2011/12 BUDGET****To the Leader of the Council (Councillor Michael White)**

By Councillor Brian Eagling

Would the Leader set out the 2011/12 budget for the new quarterly Living newspaper incorporating the following categories:

		£'000
Design/Support	x	
Production/Print	x	
Distribution		x
Advertising Income		x

**Answer:**

The Council's budget for the Living in Havering magazine is £88,000 in 2011/12. The estimated total cost of production and distribution – which includes one member of staff, design costs, printing and distribution of the magazine - is approximately £121,000 for the year.

This leaves an advertising target of £33,000 for the year, spread across four editions of the magazine, in order to balance the budget. Income for the first edition of the new magazine was nearly 50% above target – so if the magazine continues to be as popular with advertisers, we would be able to reduce the annual budget in future years.

15 **CUTS IN SERVICE BUDGETS****To the Cabinet Member for Value (Councillor Roger Ramsey)**

By Councillor Ray Morgon

Would the Cabinet Member confirm how budget cuts for this financial year have been achieved when departmental budgets have increased from £160 million to £168 million?

**Answer:**

Departmental budgets are shown net of any specific grants payable by Central Government. As part of the Government's financial settlement for 2011/12 approximately £16m of specific grants were removed from departmental budgets thereby increasing the net cost of those services.

16 **REFURBISHMENT OF CENTRAL LIBRARY****To the Cabinet Member for Culture, Towns and Communities (Councillor Andrew Curtin)**

By Councillor John Wood

Would the Cabinet Member please disclose the eventual cost of the Central Library Capital Project against the agreed budget of £4,087,175?

**Answer:**

The total cost for this project has increased above this figure and this reflects both additional costs for asbestos works and a number of issues that came to light during the project term. However the Council is still in negotiation about project costs, including certain sums that are still in dispute. It is not in the Council's best interests to put detailed financial information in the public domain whilst this is the case.

17 **CUTTING OUT RED TAPE****To the Leader of the Council (Councillor Michael White)**

By Councillor Ray Morgon

In June *Living*, the Leader talked about cutting out red tape. Would the Leader provide some tangible examples of where this has taken place?

**Answer:**

The introduction of the new Oracle System that supports the working of the Internal Shared Services Centre, brings together the processes for Finance, HR, Payroll and Procurement into a single electronic system with work flow. This has removed a large number of our previous paper drive, time consuming and human resource intensive processes. As part of this we have reviewed and changed our process, moving to recognised best practice, as part of empowered managers, removing some of the authorisation processes previously required, whilst still keeping appropriate controls.

18 **PERSONAL INJURY CLAIMS BY THE WORKFORCE****To the Cabinet Member for Value (Councillor Roger Ramsey)**

By Councillor Clarence Barrett

In terms of workforce personal injury compensation claims against the Council, would the Cabinet Member set out:

- a) Number of agreed claims over the last three years?
- b) Circumstances of each agreed claim?
- c) Agreed value of compensation for each agreed claim?

**Answer:**

Year	2008/9	2009/10	2010/11
a) Number of agreed claims over the last three years?	10	7	7

Personal injury liability claims can be complex and are generally long tailed as claims may not be brought for up to 3 years after an incident occurs and can involve long complex investigations. Many of these settlements therefore relate to incidents occurring many years before any settlement is agreed and is subject to establishing a legal liability exists to compensate. There is no automatic right to compensation. The value of a claim, once liability



is established, is determined by the nature and severity of the injury sustained and the impact on the injured party. A causal link between the incident circumstances and the nature of the injury is always determined and any contributory factors taken into account.

	b) Circumstances of each agreed claim?	c) Agreed value of compensation for each agreed claim?
2008/9	Asbestos related disease from alleged exposure decades earlier	£225,000
	Fall from step ladder	£22,400
	Assault by client – (third party shared liability)	£3750
	Fall from defective stool	£21,000
	Fall on wet floor	£6,000
	Fall on spillage	£6,000
	Fall on pathway	£12,500
	Insecure furniture pushed on to injured party	£1,300
	Tripped and fell on uneven surface	£8,500
	Tripped and fell due to trailing cable	£2,500
2009/10	Asbestos related disease from alleged exposure decades earlier (third party shared liability)	£111,647.50
	Tripped and fell on defective matting	£5,000
	Tripped and fell on uneven surface	£8,000
	Workstation design	£5,350
	Equipment fell onto injured party	£5,000
	Tripped and fell on uneven surface	£2,750
	Fell on wet floor	£2,300
2010/11	Asbestos related disease from alleged exposure decades earlier	£220,000
	Fume inhalation (third party shared liability)	£10,000
	Laceration on broken glass	£3,500
	Laceration on moving equipment	£3,000
	Fall from ladder	£2,000
	Tripped and fell on uneven surface	£10,000
	Tripped and fell on uneven surface	£6,500

#### 19 TRAILER ABANDONED ON THE HIGHWAY

##### To the Cabinet Member for Environment (Councillor Barry Tebbutt)

By Councillor Ray Morgon

Would the Cabinet Member confirm that a trailer left on the highway for several months without good reason can be removed by the Council under section 148 of the Highways Act 1980?

##### **Answer:**

The answer to this specific question is No.

#### 20 COUNCIL TAX WRITTEN OFF

##### To the Cabinet Member for Value (Councillor Roger Ramsey)

By Councillor Ron Ower

Would the Cabinet Member set out the amount of residential council tax written off in each of the last three years?



**Answer:**

The Council collected in the region of £117 million for each of the years mentioned with specific write offs in:

Year	Write off	Percentage of collectable debit
2010-11	£507,261.61	0.43%
2009-10	£647,154.92	0.55%
2008-09	£784,290.09	0.68%

21 **TANNING SALONS AND NAIL CLINICS – CONSUMER PROTECTION****To the Cabinet Member for Community Safety (Councillor Geoff Starns)**

By Councillor Ron Ower

Would the Cabinet Member please confirm what steps are currently being taken to ensure consumer protection in respect of Tanning Salons and Nail Clinics?

**Answer:**

Before a premises can operate as a Tanning Salon or Nail Clinic they need to obtain from the local authority a Special Treatment Licence under the London Local Authorities Act 1991. This imposes certain standards that have to be met and maintained at the premises. This covers any premises used, intended to be used or represented as being used for the reception or treatment of persons requiring:

- Massage
- Manicure
- Acupuncture
- Tattooing
- Cosmetic piercing
- Chiropody
- Light
- Electric

or other special treatment of a like kind or vapour, sauna or other bath. But does not include:

Premises not used for gain or reward:

- Medical practitioners
- Certain members of a health practitioner's body
- Hospitals
- Nursing homes

Part of the application process is the name, addresses, photograph, and qualifications (original certificates only; copies not accepted) of each person carrying out the special treatments.

The special treatment licence is renewed yearly where a declaration is made that there is no change to staff or premises.

If there are changes of staff or qualifications during the year the licence holder has a duty to inform the licensing section and records are updated. Before a new licence is issued the premises is inspected by a Licensing Technician and an Environmental Health, Health & Safety officer.

The premises are inspected on a regular basis under a rolling programme. Any complaints in relation to a premises instigates an inspection. The London Local Authorities Act 1991 has a number of conditions that are imposed on a premises before a licence is issued and during its licensed period.

In addition to this Havering council has conditions and procedures that we insist a premises keep to obtain and keep their Special Treatment Licence. These conditions are reviewed on a regular basis and are being updated at the moment.

**22      PARKING ENFORCEMENT**

**To the Leader of the Council (Councillor Michael White)**

By Councillor Nic Dodin

Would the Cabinet Member explain how a manually operated CCTV enforcement Vehicle could possibly issue a Penalty Charge Notice to a vehicle delayed in stationary traffic?

**Answer:**

On this occasion, although a contravention did occur, officers have exercised the use of their discretionary powers and cancelled these specific PCNs.

<i>DIVISION NUMBER:</i>	1	2	3	4	5	6	7
<b>The Mayor [Cllr. Melvin Wallace]</b>	○	○	○	○	○	○	○
The Deputy Mayor [Cllr. Lynden Thorpe]	✕	✕	✓	✓	✕	✓	✓
<b><u>CONSERVATIVE GROUP</u></b>							
Cllr. Michael White	✕	✕	✓	✓	✕	✓	✓
Cllr. Michael Armstrong	✕	✕	✓	✓	✕	✓	✓
Cllr. Robert Benham	✕	✕	✓	✓	✕	✓	✓
Cllr. Becky Bennett	✕	✕	✓	✓	✕	✓	✓
Cllr. Sandra Binion	✕	✕	✓	✓	✕	✓	✓
Cllr. Jeff Brace	✕	✕	✓	✓	✕	✓	✓
Cllr. Wendy Brice-Thompson	✕	✕	✓	✓	✕	✓	✓
Cllr. Dennis Bull	✕	✕	✓	✓	✕	✓	✓
Cllr. Andrew Curtin	✕	✕	✓	✓	✕	✓	✓
Cllr. Osman Dervish	A	A	A	A	A	A	A
Cllr. Ted Eden	✕	✕	✓	✓	✕	✓	✓
Cllr. Roger Evans	✕	✕	✓	✓	✕	✓	✓
Cllr. Georgina Galpin	✕	✕	✓	✓	✕	✓	✓
Cllr. Peter Gardner	✕	✕	✓	✓	✕	✓	✓
Cllr. Lesley Kelly	✕	✕	✓	✓	✕	✓	✓
Cllr. Steven Kelly	✕	✕	✓	✓	✕	✓	✓
Cllr. Pam Light	✕	✕	✓	✓	✕	✓	✓
Cllr. Robby Misir	✕	✕	✓	✓	✕	✓	✓
Cllr. Eric Munday	✕	✕	✓	✓	✕	✓	✓
Cllr. Barry Oddy	✕	✕	✓	✓	✕	✓	✓
Cllr. Frederick Osborne	✕	✕	✓	✓	✕	✓	✓
Cllr. Gary Pain	✕	✕	✓	✓	✕	✓	✓
Cllr. Roger Ramsey	✕	✕	✓	✓	✕	✓	✓
Cllr. Paul Rochford	✕	✕	✓	✓	✕	✓	✓
Cllr. Geoffrey Starns	✕	✕	✓	✓	✕	✓	✓
Cllr. Billy Taylor	✕	✕	✓	✓	✕	✓	✓
Cllr. Barry Tebbutt	✕	✕	✓	✓	✕	✓	✓
Cllr. Frederick Thompson	✕	✕	✓	✓	✕	✓	✓
Cllr. Linda Trew	✕	✕	✓	✓	✕	✓	✓
Cllr. Keith Wells	✕	✕	✓	✓	✕	✓	✓
Cllr. Damian White	✕	✕	✓	✓	✕	✓	✓
<b><u>RESIDENTS' GROUP</u></b>							
Cllr. Clarence Barrett	○	○	○	○	○	✕	✕
Cllr. June Alexander	○	○	○	○	○	○	✕
Cllr. Nic Dodin	✕	○	○	○	○	○	✕
Cllr. Brian Eagling	○	○	○	○	○	✕	✕
Cllr. Gillian Ford	○	○	○	○	○	○	✕
Cllr. Linda Hawthorn	○	○	○	○	○	✕	✕
Cllr. Barbara Matthews	A	A	A	A	A	A	A
Cllr. Ray Morgon	○	○	○	○	○	○	✕
Cllr. John Mylod	○	○	○	○	○	○	✕
Cllr. Ron Ower	○	○	○	○	✓	✕	✕
Cllr. Linda Van den Hende	○	○	○	○	○	✕	✕
Cllr. John Wood	○	○	○	○	○	○	✕
<b><u>LABOUR GROUP</u></b>							
Cllr. Keith Darvill	○	✕	✕	✕	✕	✕	✕
Cllr. Denis Breading	○	✕	✕	✕	✕	✕	✕
Cllr. Paul McGeary	○	✕	✕	✕	✕	✕	✕
Cllr. Pat Murray	○	✕	✕	✕	✕	✕	✕
Cllr. Denis O'Flynn	○	✕	✕	✕	✕	✕	✕
<b><u>INDEPENDENT LOCAL RESIDENTS' GROUP</u></b>							
Cllr. Jeffery Tucker	✓	✓	✕	✕	✓	✕	✕
Cllr. Michael Deon Burton	A	A	A	A	A	A	A
Cllr. David Durant	✓	✓	✕	✕	✓	✕	✕
Cllr. Mark Logan	A	A	A	A	A	A	A
<b>TOTALS</b>							
✓ = YES	2	2	31	31	3	31	31
✕ = NO	32	36	7	7	36	12	18
○ = ABSTAIN/NO VOTE	16	12	12	12	11	7	1
A = DECLARATION OF INTEREST/NO VOTE	0	0	0	0	0	0	0
A = ABSENT FROM MEETING	4	4	4	4	4	4	4
	54	54	54	54	54	54	54

This page is intentionally left blank

## **CABINET**

### **AMENDMENTS TO THE REGULATIONS FOR THE CEMETERIES PROVIDED BY THE LONDON BOROUGH OF HAVERING**

At the meeting on 13 July, Cabinet considered a report about the provision of cemetery services, in which (among other things) it was proposed that two amendments be made to the current Regulations for Havering Cemeteries. These are designed to address anomalies in the current arrangements and to ensure that the Council receives appropriate income for the services provided.

The Regulations for cemeteries provided by the Council of the London Borough of Havering govern the conduct of business within Havering's four cemeteries at Hornchurch, Romford, Upminster and Rainham. They cover such matters as offences within the cemeteries, arrangement for interments, graves and vaults, provision of memorials and fees and charges.

The Regulations need review from time to time as new and different problems arise. This report proposes two minor changes to the Cemetery Regulations.

#### Use of grave space

Currently it is possible for a person to purchase grave space in advance of an immediate burial. From time to time, a person purchasing a grave space will use that space for the burial of cremated remains, although this may not be stated at the time of purchase.

The proposal is that a grave space can only be purchased for an initial full burial. The reason behind this proposal is that there is great pressure on burial plots at the present time. Havering currently only has provision for a further 2 years of burials at the current rate of grave purchase. It is felt therefore that grave spaces should be reserved for the use of people for whom burial is the preferred choice. There are smaller plots available for those who wish to bury their cremated remains, or alternative methods of storage for cremated remains, such as sanctum vaults. This change in the regulations will slow down the rate at which the Council exhausts its burial plots. In addition, when a second full burial takes place where cremated remains have been buried, the cremated remains will be disturbed by the burial, and there are administrative and legislative requirements that follow from these arrangements.

It is proposed therefore that the current Regulations shall be amended to add a new Regulation.

**Fees and Charges**

Currently, there are two scales of charges. Fees set for non-residents are double those of residents. This is common practice in most boroughs, although some inner London boroughs do actually charge three times the resident fee, to non-residents.

The current Regulations define residents as those living or dying in the borough. This means that people who are normally resident in Boroughs outside Havering, who die in Queens Hospital or St George's Hospital will benefit from the resident rate. It is proposed to amend this anomaly so that people who die in the borough, but who are normally resident outside the borough, should pay the non-resident rate.

The proposed changes are set out in full in the appendix to this report.

**Recommendation**

**Cabinet recommends that Council approves the amendments to the Cemetery Regulations set out in the appendix, to be effective from 31 October 2011**

**APPENDIX**

**Proposed amendments to the Cemetery Regulations**

After 5(g) add new regulation 5(h)

The first burial in a standard grave must be for a full burial and not ashes. This is to avoid the cemetery staff needing to disturb the ashes at a later date to carry out a full burial (which, in any case would require an exhumation licence or permission from the Bishop). This is also to ensure that there are enough full graves for those families where burial rather than cremation is the preferred choice.

At 7 (c) replace the Current Regulation in relation to non resident fees:

“All interment and memorial fees shall be doubled in connection with the interment of any person who was neither a resident of the Borough, nor died within the Borough boundaries, except in the case of the interment of a former resident in an already existing private grave”

With new 7(c) proposed change:

7C All cemetery fees shall be doubled for any person who has no residential address within the Borough of Havering. Non-resident fees will apply to all cemetery fees if the deceased resided outside of the London Borough of Havering for a period longer than 5 years or more, at the time of their death. If the deceased purchased a grave whilst resident of the borough, they may be interred as resident.

In the case of a memorial permit application covering more than one deceased, if at least one of the dedications is to a resident of the borough a resident fee shall apply. If there has been no burial in the grave, a non resident fee will be applied to any grave purchaser whose address is outside of the London Borough of Havering.”

This page is intentionally left blank



## GOVERNANCE COMMITTEE

### AMENDMENTS TO THE CONSTITUTION

1. The Governance Committee was informed that, in respect of proposed changes to Part 3, Section 4 Functions not to be the responsibility of the Council's Executive (A) Functions relating to Town and Country Planning and Planning Control, a new paragraph - 11A – should be inserted following paragraph 11 on page 124 of the Constitution (Appendix 1).
- 2 It is further proposed to amend Section 3.7.6(p) of the Constitution which sets out powers delegated to the Head of Development and Building Control to allow the delegation of Temporary Stop Notices without necessitating consultations with the ACE and DS. This will allow the Head of Development and Building Control to serve a Temporary Stop Notice as soon as reasonably practical.

To effect this the following changes are proposed:

3.7.6 (p) (iv) will be deleted and moved to 3.7.6 (bb) following (aa) as follows

*"(bb) To take any action as necessary to achieve compliance with any case to issue a Temporary Stop Notice."*

The Committee therefore **RECOMMENDS to the Council** that, with effect from the Meeting on 21 September 2011 the above amendments be incorporated in the Constitution and become effective from that date.

**Amendment to the Constitution:**

<b>Function</b>	<b>Provisions of Act or Statutory Instrument</b>	<b>Decision Making body</b>
11A Power to issue and serve a discontinuance notice to secure the discontinuance of the use for the display of advertisements of any site which is being so used in contravention of the regulations.	The regulations made pursuant to Sections 220 and 224 of the Town and Country Planning Act 1990, namely The Town and Country Planning (Control of Advertisements) (England) Regulations 2007.	<ul style="list-style-type: none"><li>• Regulatory Services Committee</li><li>• Head of Development &amp; Building Control</li></ul>

## **REPORT OF THE CHIEF EXECUTIVE**

### **AUTHORISATION OF STATUTORY OFFICERS**

Following the retirement of Christine Dooley, Assistant Chief Executive Legal & Democratic Services, and the imminent resignation of Andrew Ireland, Group Director Social Care & Learning, arrangements are needed to secure the continued exercise of their powers and duties as statutory officers pending appointment of substantive successors.

Mrs Dooley was Monitoring Officer, and Mr Ireland combines in his post the separate statutory offices of Director of Adult Social Services and Director of Children's Services. The Council has a statutory obligation to have each of these offices; moreover, the two Director offices can only be held by one person where the Council is satisfied that the individual in question is competent, and has the capacity, to undertake the powers and duties of both appointments.

Arrangements are being made to ensure continuity of responsibility for the various powers and duties pending permanent arrangements being made.

It is intended that the three offices be allocated as follows:

- (1) Monitoring Officer: Ian Burns, Head of Legal Services and currently Acting Assistant Chief Executive;
- (2) Director of Children's Services: Sue Butterworth, Head of Learning & Achievement, as Acting Director; and
- (3) Director of Adult Social Services: Lorna Payne, who will be Interim Director

In addition, temporary changes will be needed to the Council's Constitution in order to ensure that the Acting and Interim appointees are duly authorised to undertake the full range of functions delegated to them. It is suggested that the Monitoring Officer be authorised to make the necessary changes.

### **RECOMMENDATIONS**

- 1 That the following individuals be authorised to exercise the responsibilities of the statutory officers indicated:
  - (1) Monitoring Officer: Ian Burns, Acting Assistant Chief Executive, with immediate effect;

- (2) Director of Children's Services: Sue Butterworth, Acting Director, with effect from the date on which Andrew Ireland leaves the Council's service; and
- (3) Director of Adult Social Services: Lorna Payne as Interim Director, with effect from the date on which Andrew Ireland leaves the Council's service.

- 2 That the Monitoring Officer be authorised to make such changes as are necessary to enable the Acting/Interim officers to carry out the duties assigned to them.

**Staff Contact:** Ian Buckmaster, Committee Administration Manager  
01708 432431  
[ian.buckmaster@havering.gov.uk](mailto:ian.buckmaster@havering.gov.uk)

**Cheryl Coppel**  
**Chief Executive**

**Background Papers**

None.

## **CHAMPION FOR THE 14-19 DIPLOMA COUNCILLOR PAUL ROCHFORD**

### **ANNUAL REPORT 2010.11**

#### Summary of activity

There are regular monthly meetings between myself, the council's Children's and Young People lead member and Diploma Champion, and key local authority officers. Also, I have undertaken a series of joint visits with the Head of Learning & Achievement to a variety of Alternative Providers and School Sixth Forms.

- 2010-11 has been a significant year for 14-19 developments in Havering, not least of which has been the expansion of our diploma programmes.
- Foundation Learning was launched from September 2010.
- The transfer of LSC staff to the local authority to manage the process of commissioning post 16 provision went smoothly.
- Havering's 14-19 partnership actively developed a strategy to ensure that Raising Participation Age targets are fully achieved.

#### Diploma Update

Below is a summary of the progress being made in implementing each of the new Diploma qualifications in the London Borough of Havering. In general, schools, staff and students have spoken very positively about the diploma experience they have been receiving. Most schools have recognised the value of the qualification but logistics, the current uncertainty around the future of vocational qualifications (including Diplomas) in light of the Wolf Review into Vocational Education and the subsequent Government response, the significant reduction in entitlement funding and the announcement that there will no longer be additional funding for Diploma qualifications means it is unlikely that many, if any, schools will continue to provide this opportunity, although the numbers of students have grown significantly with 149 students across 8 schools and Havering Sixth Form college now following the Diploma qualification in 2010/11.

#### **Creative & Media**

This is our most popular Diploma line of learning with 77 students following the qualification in 2010/11 across 5 schools and Havering Sixth Form

college. The schools delivering the qualification pre-16 are Abbs Cross (3), Bower Park (17), Brittons (15), Frances Bardsley (13) and Marshalls Park (5). Havering Sixth Form College are delivering the qualification post-16 to 25 students.

Delivery and quality assurance at level 2 pre-16 is working well and student feedback is positive, particularly around the variety of skills and techniques and processes being explored. Staff feedback is generally positive, however the organisation of students and travel between sites can sometimes be difficult, although any issues are swiftly and positively dealt with.

At level 3 post-16, Havering Sixth Form college continue to deliver an exciting programme of study that has seen the students get involved in borough wide projects including the *Apprenticeship Roadshow*. All feedback from this was very positive and they are also now planning to engage with young learners throughout the borough using drama workshops to actively promote the *Raising of the Participation Age*. Students are benefiting greatly from an enthusiastic and professional delivery team that use 'live' briefs and positive employer engagement to expand the experience for learners.

There will be no new pre-16 students on the Creative and Media Diploma in 2011/12, but at post-16, Havering Sixth Form college anticipates a new cohort for this coming academic year.

### **Information Technology**

This is our second most popular line of learning with 38 students following the qualification in 2010/11 across 3 schools. The schools delivering the qualification are Chafford (24), Marshalls Park (10) and Sanders Draper (4).

Delivery and quality assurance at level 2 is working well. Staff have liaised positively with Havering Business Education Partnership and have used several employer engagement activities to enhance and improve delivery of specific units. Learners are enjoying the course and there is positive feedback all round.

There will be no new pre-16 students on the IT Diploma in 2011/12.

### **Business Administration & Finance**

There are 13 students following the qualification at Chafford in 2010/11.

Delivery and quality assurance at level 2 is working well. Staff have liaised positively with Havering Business Education Partnership and have used several employer engagement activities to enhance and improve delivery of specific units. Students are enjoying the course and there is positive feedback all round.

There will be no new pre-16 learners on the BAF Diploma in 2011/12.

## **Hair And Beauty**

This was our only Diploma line of learning from last year (2009/10) and there are 10 students across 2 schools continuing their qualification this year at Chafford (9) and Emerson Park (1). There are a further 11 new students following the qualification from Chafford in 2010/11.

The level 1 diploma continues to be well received and feedback from both Havering College of Further and Higher Education and participating schools is very positive. Feedback from moderation visits has high praise for the learners and the work they are undertaking. Staff are happy with the progress of learners.

There will be no new pre-16 learners on the HAB Diploma in 2011/12.

## **Manufacturing and Product Design**

Havering Sixth Form College are offering the MPD diploma to a group of Level 3 post 16 students for 2011/12. Interest has been positive and a group are expected to start in the next academic year.

## **Sports and Active Living**

Due to the current uncertainty around the future of vocational qualifications (including Diplomas) from central government, the SAL group have decided not to begin diploma delivery in 2011/2012 but have committed to continuing with induction, employer engagement and sharing good practice events between post-16 providers across a wider range of vocational qualifications, including BTEC's. It is hoped that when the future of vocational education is a little clearer, a good rapport between institutes and some working models will be able to be transferred to the SAL diploma initially at post-16 and then hopefully pre-16.

## Havering 14-19 Partnership and RPA

Current year 9 students will be in compulsory education until age 17, current year 8 students will be in compulsory education until 18. The 14-19 partnership has actively developed a strategy and curriculum that enables Havering to meet this demand. An outline of this strategy is as follows:-

- Work with parents, schools and local parents to tackle the causes of disengagement in the earlier stages of education – through primary and secondary phases and with a particular focus on Key Stage 3.
- Deliver the September Guarantee and make available quality, flexible and part-time provision to meet the needs of the more vulnerable – and those wishing to study part-time alongside full-time occupation.
- Work with the National Apprenticeship Service (NAS) to engage with and assist employers to support more young people into an Apprenticeship; to ensure young people in employment are able to

access accredited training' and to further develop good education – employment partnerships

- Ensure guidance services meet the needs of all young people in their area, including challenging stereotypes and delivering effective IAG for those wishing to study part-time alongside a full-time occupation.
- Use the opportunity of the 16-19 funding transfer to ensure the knowledge and expertise of all local providers and agencies inform commissioning, through the 14-19 Partnership and 14-19 plan.
- Ensure the 14-19 plan includes participation trajectories to 2013-15 and informs the mix and balance of all 14-19 provision and services to be commissioned.
- Ensure the local workforce has the skills, knowledge and behaviours to deliver full participation
- Deliver tailored communications to the wide range of local audiences about RPA.

A full RPA media campaign has been developed and starts in May 2011, this includes a series of Roadshow events taking place at schools, events for parents and employers, drama based workshops for students, as well as targeted press releases using local and social media.

#### Future 14-19 developments

The 14-19 education phase remains a key element of government thinking and strategy, in order to take education in the UK into the 21<sup>st</sup> century. The Government's response to the Wolf Review confirms that vocational education is immensely valuable for two, crucial reasons.

Firstly, it is an essential part of a broad curriculum. Just as much as academic education, vocational learning provides invaluable opportunities for young people to develop their potential and expand what they know, understand and can do; and to gain recognition for that learning which allows them to progress as they move to adulthood.

Secondly, vocational education is a vital underpinning for the economy. The development of young people's skills in areas of immediate relevance to employers and business is a central part of the Government's plans to boost economic growth, and to support higher levels of youth employment.

The Government has committed to put in place reforms to address the long term weaknesses in practical learning and Professor Wolf's review establishes the principles on which they can do that.

In addition to the various curriculum changes; such as a revised secondary curriculum, apprenticeships, foundation learning, as well as for GCSE's and A levels, by far the biggest change in education facing the current generation is the challenges of Raising Participation Age.



Therefore the main objectives for Havering in the next 12 months are to respond to the various reforms being planned by the Government for the 14-19 phase, including vocational education and to prepare our students, parents, schools, colleges and providers for the *Raising of the Participation Age*. This later challenge may be assisted by having in place an RPA Council Champion at elected member level.

This page is intentionally left blank

**14-19 Entitlement Co-ordinator**

**SUMMARY REPORT**

**Overview**

As a result of consultation with the London Borough of Havering, a need for support on 14-19 rollout was identified and the job role of 14-19 Entitlement Co-ordinator was created to deal specifically around the dissemination of information to a variety of audiences including schools/colleges, parents/carers, Connexions colleagues, CEIAG network and partner agencies. Karen Thipthorp of Prospects Services Ltd was recruited in November 2009 on secondment from her home borough of Bexley to undertake this task. The contract initially ran until the end of March 2010 but was extended until July 2010 due to the success of the rollout and as all parties were agreed that more time should be given to the role in order to maximise the impact and reach a wider target audience. Karen quickly established the relevant networks including attending Collegiate and Diploma Lead meetings along with involving herself with the CEIAG Network, Cegnet and the Diploma Employer Champion Network whilst working with Connexions colleagues, Prospects in the City and offering INSET to all 18 schools in the London Borough of Havering.

**Year 9 Options Evenings**

Karen also offered her services at Year 9 Options evenings to all schools in the borough and was invited to attend at 5 of the borough's schools: Abbs Cross, Albany, Chafford, Marshall's Park and Sanders Draper. The efficacy of Karen's attendance was not easy to measure as different schools had different levels of engagement with the Diploma. In some schools, notably Abbs Cross, there was high support for her attendance and, as a result, in conjunction with James O'Keefe, a number of parents/carers were seen and information (both verbal and prepared) was disseminated. At other schools where there was less commitment to the Diploma a lesser role/prominence was given but Karen ensured that Diploma documentation was made available to the school for use on the evening and after the event.

**Diploma Events**

With the help of local information from Connexions' colleagues, it was identified that the same event should run in two locations in the borough in order to best capture the widest possible audience. Karen organised both events with support from James O'Keefe, John Mead and Connexions' colleagues and with some help from the Diploma Leads. Historical evidence from previous events which had been run in the borough suggested that attendance would be very low (Karen was informed that figures in the low 20s would not be unreasonable). The four events in February attracted audiences of 150-220 parents/carers and students and the two events in May attracted similar numbers.

The six events organised were:

- 2<sup>nd</sup> February 2010, Langton's Hall, Hornchurch – 2 sessions – Year 9 parents/carers/students
- 9<sup>th</sup> February 2010, Town Hall, Romford – 2 sessions – Year 9 parents/carers and students
  
- 18<sup>th</sup> May 2010, Duke's Hall, Hornchurch – Year 8 parents/carers and students
- 27<sup>th</sup> May 2010, Salvation Army, Romford – Year 8 parents/carers and students

**2<sup>nd</sup> and 9<sup>th</sup> February – Year 9**

These six events were organised in anticipation of Year 9 Options so that young people were aware of the new qualification in advance of their making choices. In order to maximise parents/carers' availability, we decided to run two sessions on each evening. The target audience was reached by way of a direct mailshot from the Connexions database to named students offering them the choice of both dates and all four sessions. A reply-paid envelope

## **Council, 21 September 2011**

was included for ease of reply along with the added option of contacting Karen by email. Responses and enquiries were collated by Karen.

### **18<sup>th</sup> and 27<sup>th</sup> May – Year 8**

The May events were organised in conjunction with Prospects in the City and, again, were run in two locations in Havering. These events were aimed at Year 8 as they were the first cohort (under the previous government) to be required to stay on in education or a job with accredited training until the age of 17 in line with the previous government's edict on Raising of the Participation Age. The first event on May 18<sup>th</sup> 2010 was at Duke's Hall, Hornchurch and the second on May 27<sup>th</sup> at the Salvation Army, Romford. Audiences for both events were between 140-220 parents/carers/students.

For this event, parents/carers of Year 8 pupils received a generic invitation which was hand-delivered by Karen and a colleague to all of the 18 maintained secondary schools in the borough. Prospects in the City organised the monitoring of replies and queries and a personalised invitation was sent out to parents/carers to confirm their attendance at the event they had opted for.

All events were opened by a keynote speaker and comprised an expert panel for Q&A (including Diploma Leads, HE/FE specialists, Diploma Employer Champion) along with the support of Connexions' staff and, for the events held in May, in partnership with Prospects in the City.

The statistics and analysis of the data gathered became more sophisticated after the first events in February, hence the different formats of the information presented below:-

### **Langton's Hall – Tuesday 2<sup>nd</sup> February Diploma Event Session 1**

#### **Attendees**

120 plus attended over the two events which were aimed at parents/carers of Year 9 students. The figure of 120 represents a mix of parents/carers and students. Had some good feedback from parents/carers as they left including a few from Sacred Heart who were disappointed their school was not doing anything for 2010.

#### **Year 9 Pupils**

Male Pupils: 27

Female Pupils: 24

First Session: 51 young people represented

#### **School:**

Albany: 1

Chafford: 13

Gaynes: 11

Redden Court: 5

St Edwards: 1

Campion: 3

Frances Bardsley: 3

Marshalls Park: 3

Sacred Heart: 11

### **Langton's Hall – Tuesday 2<sup>nd</sup> February Diploma Event Session 2**

#### **Year 9 Pupils**

Male Pupils: 18

Female Pupils: 19

Second Session: 37 young people represented

#### **School:**

Bower Park: 1

Chafford: 4

Campion: 1

Frances Bardsley: 7

**Council, 21 September 2011**

Gaynes: 8                                  Redden Court: 2  
 Royal Lib: 3                                Sacred Heart: 8  
 Sanders Draper: 1                        St Edwards: 2

**Romford Town Hall – Tuesday 9<sup>th</sup> February Diploma Event Session 1**

200 plus attended over the two events which, again, were aimed at parents/carers of Year 9 students. Had some good feedback from parents/carers as they left) there was most popular choice with these groups which was IT as we run out of these booklets.

**Year 9 pupils**

Male pupils: 15  
 Female Pupils: 41

First Session: 56 young people represented

**School:**

Albany: 2                                  Bower Park: 3  
 Champion: 4                                Chafford: 5  
 Frances Bardsley: 9                        Gaynes: 2  
 Marshalls Park: 8                         Redden Court: 7  
 Sacred Heart: 6                             Sanders Draper: 8  
 St Edwards: 2

**Romford Town Hall – Tuesday 9<sup>th</sup> February Diploma Event Session 2**

**Year 9 pupils**

Male pupils: 17  
 Female Pupils: 17

First Session: 34 young people represented

**School:**

Bower Park: 5                                Champion: 3  
 Frances Bardsley: 7                        Gaynes: 2  
 Marshalls Park: 3                         Redden Court: 3  
 Sanders: 9                                    St Edwards: 2

**Diploma Event – Year 8, Tuesday 18<sup>th</sup> May, Dukes Hall – Hornchurch**

<b>School:</b>	<b>Attendees:</b>		
Abbs Cross	Girls: 8	Boys: 5	Total: 13
Albany	Girls: 4	Boys: 7	Total: 11
Champion	Girls: 0	Boys: 6	Total: 6
Chafford	Girls: 5	Boys: 2	Total: 7
Coopers	Girls: 2	Boys: 1	Total: 3
Gaynes	Girls: 8	Boys: 6	Total: 14
Emerson	Girls: 0	Boys: 2	Total: 2
Hall Mead	Girls: 4	Boys: 1	Total: 5
Marshalls Park	Girls: 3	Boys: 3	Total: 6
Royal Liberty	Girls: 0	Boys: 1	Total: 1
St. Edwards	Girls: 5	Boys: 4	Total: 9
Sacred Heart	Girls: 4	Boys: 0	Total: 4
Sanders Draper	Girls: 9	Boys: 6	Total: 15
<b>Totals:</b>	<b>Girls: 52</b>	<b>Boys: 44</b>	<b>Total: 96</b>

There were approximately 220 attendees made up principally of parents/carers.

**Diploma Event – Year 8, Thursday 27<sup>th</sup> May, Salvation Army – Hornchurch**

<b>School:</b>	<b>Attendees:</b>		
Abbs Cross	Girls: 2	Boys: 3	Total: 5
Albany	Girls: 4	Boys: 1	Total: 5
Bower Park	Girls: 2	Boys: 1	Total: 3
Campion	Girls: 0	Boys: 6	Total: 6
Chafford	Girls: 2	Boys: 1	Total: 3
Gaynes	Girls: 2	Boys: 1	Total: 3
Emerson	Girls: 0	Boys: 3	Total: 3
Hall Mead	Girls: 0	Boys: 3	Total: 3
Kingswood	Girls: 1	Boys: 1	Total: 2
Marshalls Park	Girls: 2	Boys: 3	Total: 5
Redden Court	Girls: 0	Boys: 1	Total: 1
Royal Liberty	Girls: 0	Boys: 1	Total: 2
St. Edwards	Girls: 4	Boys: 5	Total: 9
Sacred Heart	Girls: 2	Boys: 0	Total: 2
Sanders Draper	Girls: 1	Boys: 1	Total: 2
<b>Totals:</b>	<b>Girls: 22</b>	<b>Boys: 31</b>	<b>Total: 54</b>

There were approximately 140 attendees altogether made up principally of parents/carers.

**INSET/Staff Training**

In addition to the above, Karen held three training sessions with Connexions' colleagues in Havering and delivered INSET on an 'Overview of the Diploma' to St Edward's School on 10 March 2010 to an audience of 9 staff and on 5<sup>th</sup> July to Redden Court school where the attendance numbered 8 members of staff including the Head Teacher and two Deputy Heads. No other schools have taken up this offer despite reminders from Karen through the Collegiate and Diploma Leads' meetings and reminders from James O'Keefe.

**Diploma Leaflets**

A supply of the then DCSF leaflets for each Diploma line which were made available to Connexions' colleagues, schools/colleges and parents/carers/students at Options evenings and the Diploma events. Where relevant, information has been disseminated to colleagues, schools/colleges, parents/carers students by signposting them to useful websites. This has often been through requests from those parents/carers who were unable to attend the events organised wherein Karen either posted or emailed relevant documentation and weblinks.

**Other Networks**

Karen joined the CEIAG Network to help disseminate information about the Diploma and the wider offer of INSET and any bespoke training that might be required to in-house Careers Co-ordinators. In addition, Karen has continued to work closely with her home borough of Bexley as it is a 'statistical neighbour' to Havering and has maintained contact with relevant 14-19 colleagues there to share best practice. This has been useful for sharing information on experiences of Careers Education and IAG across both boroughs and has fostered greater partnership working and sharing of resources ie common networks (Cegnet, the Diploma Employer Champion Network etc). Karen has worked closely with Jo Jack, Prospects Curriculum & Training Manager to devise INSET and contribute to the CEIAG Network and also with Prospects in the City.

Karen has attended the Collegiate and Diploma Leads Meetings at CEME and has regularly updated attendees with progress reports.

## **Findings**

### **Overview**

It became quickly apparent that, as in other boroughs, there was much misinformation and lack of understanding about the concept of the Diploma and its framework and content. This led us to ensure that any information circulated or events attended made no assumption of any understanding of the new qualification. In view of this, the four month timescale was almost wholly focused on disseminating information about the Diploma. The offer of attending Year 9 Options Evenings, setting up events for parents/carers of Year 9 students and INSET to schools went out swiftly to address these immediate needs.

### **Year 9 Options Evenings**

The original four month tenure of the contract (November 2009-March 2010) meant that the delivery period was somewhat short. This had no impact on Karen's offer to attend Year 9 Options Evenings at all 18 of the maintained secondary schools as work had begun on this before the end of the Christmas term. That said, only 5 out of the 18 schools took up this offer with varying reasons being cited by schools who did not: 'students already well-versed in the Diploma', 'planned events around the Diploma will suffice', 'not needed this year', 'school not yet engaged with the Diploma'. Local information from colleagues and other networks based on their previous experience confirmed that this outcome was not unexpected.

### **Diploma Events**

Again, despite there being a tight timescale it was still possible to organise and run four events in February 2010. There were varying levels of support from the 18 maintained secondary schools in the borough and low expectation about parent/carer involvement (around low 20s was suggested) for such events but the attendance numbers (140-220) at all six events would seem to bear out a strong appetite for Havering parents/carers to be kept informed of new developments in education in order that they are able to help their offspring make informed choices.

Extending the contract to July 2010 allowed us to focus on parents/carers of Year 8 students and a further two events were organised in May 2010. Attendance was strong again (140-220) and not only were parents/carers able to learn about the Diploma in advance of next year's Options but also about the wider 14-19 reform particularly as Year 8 would be the first cohort for Raising of the Participation at that time.

At all events, involvement of Diploma Leads was quite low and mainly revolved around support from those leading on Creative & Media, Business Administration and Finance and IT along with support from Hair & Beauty lecturers at HCFHE.

### **INSET**

INSET training on an 'Overview of the Diploma' was offered to all 18 maintained secondary schools out of which 2 schools took up the offer. Both schools seemed to receive this well and it was confirmation that understanding of the Diploma, in this context, is relatively limited. This does not, of course, preclude the fact that some schools will have accessed training from other sources either central or local and may be well versed nor that those schools who had engaged with the Diploma (ie schools who were leading/part of the consortium) had not already undergone rigorous training in the run up to rollout.

### **Conclusions**

- Focusing the emphasis on the Diploma for the duration of the contract was a necessity in light of lack of activity around this in the previous academic year.
- Getting schools on board with IAG around the Diploma was patchy but drawing conclusions from this is not a straightforward issue. One element which has been strongly proposed in a variety of arenas is that the Diploma structure is complicated and therefore difficult to get across to those who need the information most,

however, it is part of statutory obligation that impartial IAG is delivered in schools, by schools.

- Colleges are more engaged with the Diploma and have been more actively engaged in its promotion as their infrastructure is often better suited to accommodating the new qualification.
- Higher than expected attendance numbers at all six events would seem to indicate that parents/carers are eager to have up-to-date information on education and are willing to give up their free time to learn what choices are on offer to learners.
- Due to the recent change in government the Diploma offer is already changing and it will be important for all those involved in education and IAG to ensure that their information is completely current.

### **Recommendations**

- It will be important to identify who will offer ongoing 14-19 support and to ensure that those involved have access to coherent and ongoing training/information. Obvious candidates for this are in-house Careers Co-ordinators and Connexions PAs as well as the appointed senior staff member in school who is responsible for IAG (as per statutory requirement).
- Benefit can be derived from maintaining the link between the 'statistical neighbours' of Havering and Bexley in order to share best practice and resources particularly due to the similar destinations of both boroughs (ie London universities, City jobs etc). A mechanism needs to be found for this – Karen is working to find a solution and will report back to the London Borough of Havering. It may also be beneficial to identify other 'statistical neighbours' in order to establish similar partnership working relationships.
- As the Diploma offer changes over time and the funding with it most likely diminishes, more creative ways of delivering IAG will need to be implemented. As an example, Prospects are looking into using 'pods' to deliver roadshows in schools/colleges in order to keep the momentum of IAG around the Diploma and related issues.



**Contact List**

<b>Name</b>	<b>Title</b>	<b>Employer</b>	<b>Contact Details</b>
Trevor Cook	14-19 Strategy Manager	London Borough of Havering	<a href="mailto:Trevor.cook@havering.gov.uk">Trevor.cook@havering.gov.uk</a>
John Mead	Senior Inspector, HIAS	London Borough of Havering	<a href="mailto:John.mead@havering.gov.uk">John.mead@havering.gov.uk</a>
James O'Keefe	Diploma Co-ordinator Lead Assessor	London Borough of Havering	<a href="mailto:jokeefe@havering-college.ac.uk">jokeefe@havering-college.ac.uk</a>
Jo Rigby	Head of Schools Liaison	HCFEHE	<a href="mailto:Jo.rigby@havering-college.ac.uk">Jo.rigby@havering-college.ac.uk</a>
Uly Lyons	Subject Sector Leader, Creative Arts & Media	HSFC	<a href="mailto:UlyssesLyons@havering-sfc.ac.uk">UlyssesLyons@havering-sfc.ac.uk</a>
Paul Hawkins	Deputy Head	The Chafford School	<a href="mailto:phawkins@thechafford.havering.sch.uk">phawkins@thechafford.havering.sch.uk</a>
Debbie Jones	Director of Business & Enterprise	The Chafford School	<a href="mailto:djones@thechafford.havering.sch.uk">djones@thechafford.havering.sch.uk</a>
Geoff Hill	Director	HBEP & Rebep	<a href="mailto:Geoff.hill@rebep.co.uk">Geoff.hill@rebep.co.uk</a>
Zara McLean	Delivery & Partnership Manager	UEL	<a href="mailto:z.mclean@uel.ac.uk">z.mclean@uel.ac.uk</a>
Claire Duke	External Liaison	Anglia Ruskin	<a href="mailto:Claire.duke@anglia.ac.uk">Claire.duke@anglia.ac.uk</a>
Linda Norris	External Liaison	Anglia Ruskin	<a href="mailto:Linda.norris@anglia.ac.uk">Linda.norris@anglia.ac.uk</a>
Sarah Ramsay	Hair & Beauty Lecturer	HCFEHE	<a href="mailto:sramsay@havering-college.ac.uk">sramsay@havering-college.ac.uk</a>
Jo Davies	Hair & Beauty Lecturer	HCFEHE	<a href="mailto:jdavies@havering-college.ac.uk">jdavies@havering-college.ac.uk</a>
Jonathan Brookes	Diploma Employer Champion	Lakehouse Construction	<a href="mailto:Jonathan.brookes@lakehouse.uk.com">Jonathan.brookes@lakehouse.uk.com</a>
Rob McKenzie	Events & Finance Administrator	Diploma Employer Champion Network	<a href="mailto:rob.mckenzie@educationandemployers.org">rob.mckenzie@educationandemployers.org</a>
Joanne Carroll	Project Co-ordinator	Prospects in the City	<a href="mailto:Joanne.carroll@prospects.co.uk">Joanne.carroll@prospects.co.uk</a>
Jo Jack	Curriculum & Training Manager	Prospects Services Ltd	<a href="mailto:Jo.jack@prospects.co.uk">Jo.jack@prospects.co.uk</a>
Jane Cribbon	Operations Manager	Connexions Romford	<a href="mailto:Jane.cribbon@prospects.co.uk">Jane.cribbon@prospects.co.uk</a>

All four events owe tribute to the generous contribution of those above and other colleagues without whom the success of the evenings would not have been assured.





## CHAMPION FOR DIVERSITY COUNCILLOR OSMAN DERVISH

### ANNUAL REPORT 2010/11

#### THE WORK OF THE DIVERSITY MANAGEMENT TEAM 2010 - 2011

##### **Introduction**

I am pleased to present this report as the Member Champion for Diversity.

##### *New permanent team*

Martha Goodhill, Diversity Programme Manager – July 2011

Andreyana Ivanova, Diversity Adviser – July 2011

Carol Jackson, Office Manager

(Fitzroy Andrew and Olu Smith have left)

##### **Key areas of action**

##### *Equality Framework for Local Government*

'Achieving' rating under EFLG was gained in November 2011 – this was the first time that Havering's work on equality management has been externally assessed and validated in this way.

The challenge focused on five themes:

- Knowing our community and equality mapping
- Place-shaping, leadership, partnership and organisational commitment
- Community engagement and satisfaction
- Responsive services and customer care
- Modern and diverse workforce

The 'Achieving' rating was gained following a Diversity peer challenge whereby external assessors reviewed case studies sent prior to two days of interviews where many members of the organisation including Heads of Service, elected members and external organisations were engaged.

The peer challenge which took place over two days allowed Havering to show its good work in these themed areas.

There was a great deal of work put in by all those who participated, including the compiling of case studies and in interviews which should be acknowledged here and our appreciation to those involved given.

**Departmental E & D groups**

In 2009/10, every directorate established a local equality and diversity group to oversee and monitor progress, to support the existing Diversity Steering Group and Diversity Management Group, to commit and work towards EFLG and ensure that the strategic thrust of the Council's equalities approach was adapted to reflect the range of service contexts. All groups continued to meet regularly throughout 2010/11.

**Single Equality Scheme**

The Council's Single Equality Scheme covering the period 2010 – 2013 was completed in draft and proceeded through the formal channels of approval in September 2010. The Scheme is directly linked with departmental service plans, effectively drawing together relevant activities and goals identified in service plans. This will ensure that progress towards meeting equality goals will be part of the Council's overall performance management framework, and thereby consolidate progress towards mainstreaming.

**Achievements carried over from last year**

**Staff Networks** established during previous years – the Young People's Network and the Race Equality Board (previously SPACE) – continue to function. The Race Equality Board underwent a further evolution to become the Race Equality Forum, with the intention of developing an inclusive approach to fostering understanding of race equality matters across the Council.

Last year saw a successful **International Women's Day** event. 2010's event on 6 March was the largest to date, and was organised around the theme of 'Connecting Across Generations'. Frances Pennel-Buck, Chair of NHS Havering attended and formally opened the event. Speakers included Chief Inspector Jo Edwards, who has worked in Havering for many years and who spoke about her career in the emergency services; travel writer Frances Linzee Gordon; and Linda Taylor, Community Commissioner for the Girl guides, representing the voluntary sector, who spoke about the 100<sup>th</sup> anniversary of Girl Guiding.

**Priorities for the coming year**

These will include the following:

- Finalise Single Equality Scheme and Action Plan
- Completion and publication of 100% of Equality Impact Assessments
- Measurable progress on tackling alienation and disaffection amongst long-standing communities, via staff training and innovative community engagement work
- Closer integration and linkage between the work of the Diversity Management Group and colleagues in Community Engagement and Development, and in Policy, Partnership and Performance
- Develop Community Engagement Strategy (including Community Cohesion) and develop Consultation Toolkit (with focus on "hard to reach" groups)



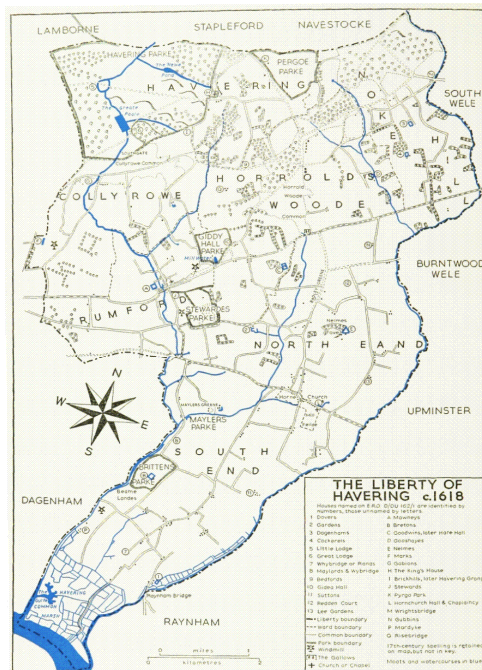
## CHAMPION FOR THE HISTORIC ENVIRONMENT COUNCILLOR ANDREW CURTIN ANNUAL REPORT 2010/11

### STRUCTURE

This year's Report of the Historic Environment Champion is divided in four parts with two appendices;

1. Preventing a Small Society.
  2. Communities and People.
  3. Policy and Strategy.
  4. Recommendations.
  5. Appendices.
- Appendix 1; Havering Local Studies and Family History Centre 2010/2011, written by the Havering Library Service Local History Librarian
  - Appendix 2; An Overview of the work of Havering Museum Ltd 2010/2011 compiled by the Havering Council Culture Policy and Projects Officer.

I am very grateful to Jacqui Barr and to officers elsewhere in the local authority and employees of Havering Museum Ltd. for their assistance over the year, and in the preparation of this report.



<http://www.british-history.ac.uk/>

*Map of Liberty of Havering c1618.*

## 1. PREVENTING A SMALL SOCIETY.

Though big government at both a local and national level is potentially damaging to both society and culture, it is equally true that the retrenchment of government at both levels can have damaging social and cultural consequences. If society is not to be reduced by current changes then charitable, community, voluntary and other third sector groups will have to be able to flourish and grow. Alternative funding sources need to be identified to ensure that this happens, enabling those locally-significant charitable and voluntary sector organisations which require funding to employ staff to carry out their work to continue doing so. Failure to do this runs the risk of the creation of a small society, rather than the “Big Society” which Government aspires to, or the “Good Society” espoused by the Opposition in Parliament. Charitable and voluntary organisations in the heritage sector will be central to this for a number of reasons;

- **Civic Pride.** A strong sense of local histories and an understanding and empathy for the fabric and past of a place is a pivotal aspect of a sense of pride and ownership in a place, with all of the social benefits which this and the sense of self-worth which comes with it brings.

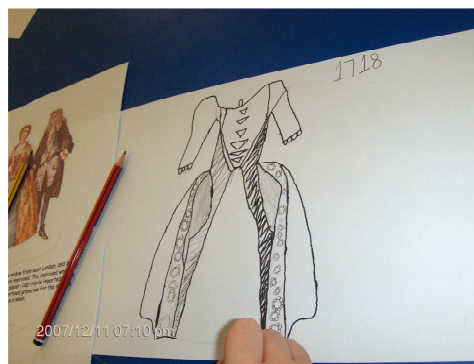


*50th Anniversary of Harold Wood Library.*

- Havering residents make strong links between local history and a sense of pride in where they live. The 2010 Havering Culture Survey asked local residents to indicate how strongly they agreed with various statements about a cross-section of cultural activities. 70% gave a score of 8 or more out of 10 to the statement “Heritage in Havering is a valuable asset to the borough”. 74% agreed with the statement that local heritage is “fun and enjoyable”. 72% said they would like to learn more about local history.
- **Volunteering.** Local history is a key focal point for volunteering in Havering. Residents gain much pleasure from volunteering in organisations involved in studying and conserving the historic and natural environment and researching local history. Among others in the borough Gidea Park and District Civic Society has some 600 members. Both Romford and Hornchurch and District Historical Societies have healthy membership levels and lively newsletters. Friends of Upminster Windmill has a membership of about 200 local enthusiasts and volunteers, many Friends of Parks groups deal directly with

significant historic environments – Friends of Langtons Gardens, Raphael and Lodge Farm Parks, Bedfords Park, and King George’s Playing Fields come immediately to mind, as do the volunteers at Thames Chase, carrying out practical work in the parks and fund-raising to improve them in the future. Most notably, of course, Havering Museum is operated and governed by volunteers, and they employ the two vital members of staff there, who make such an important contribution to ensuring both the intrinsic and instrumental role of the museum in culture and society within the borough.

- **Young People.** Getting involved in local history offers young people positive activities and the opportunity for greater self-awareness and personal development. Havering Museum Ltd. are working with young people to develop two new youth projects from their base in High Street, Romford. The work of Havering Museum with young people has recently been recognised by the Mayor of London.
- **Education.** The pivotal role of history and local history in a rounded education has been highlighted by the 2011 Ofsted report “History for All“. Debate has been further fostered by the views of Niall Ferguson on the matter. Both sides of the argument agree, however, that history matters in a child and young person’s education. Local history in particular has the power to bring abstract principles and distant events alive for children, stimulating minds and imaginations and improving learning. Havering teachers view local history as being a useful educational resource when teaching a wide range of disciplines, and a recent appeal for information on how local schools use local history in their teaching, and how the link between pupils, archives, artefacts and the historic environment in Havering which I sent to all Head Teachers in the borough has been well received. Havering Museum Ltd. collects object and artefacts relating to the history of Havering and employs an Education Officer who is working with local primary schools on providing support from the museum collection for the curriculum throughout the borough. The Local Studies Library and Archive collects documents and material on paper or in two dimensions. A number of schools have used the resources which it offers to support teaching over the last year.



*Pupils from Rainham Village Primary School study local history at Rainham Hall*



- **Older people.** Local history offers older people opportunities to volunteer and learn, maintaining active minds and healthy bodies, opportunities to socialise and to enjoy a high quality of life with all the social benefits that come from that. Havering Museum is staffed by over 40 trained volunteers, many of whom are older people. Local historical societies, civic and amenity societies and other such vital supports to a civilised society are often attractive to older people.
- **Inclusion.** Locally the work of the History Group at the Western Road Life Skills Centre in Romford has produced important social benefits for group members with learning disabilities - including a greater awareness and understanding of concepts such a future time (important for independent living) - as well as being very enjoyable and resulting in high-quality research and learning. Work by local groups such as the Academy of African Arts and East London Malayalee Association has used history and diverse traditions to overcome perceived barriers between communities.



*The Western Road Life Skills Centre History Group at Work.*

- **Health.** The contribution of local history to health, in particular to mental health, has been highlighted by studies such a “Opening Minds; Mental Health, Creativity and the Open Museum” by Museums, Libraries, Archives Renaissance East Midlands and Leicestershire County Council, published in 2010. The study argued that work with museum and archive collections made an important contribution to promoting mental health and recovery from mental illness because “Being able to see, smell or touch strange or beautiful things (or maybe very familiar objects from childhood) and then share such experiences with others through imagination and creativity can bring people back to themselves and begin to revitalise their confidence in communicating with others”, (p.7) and that work with museum and archive collections resulted a “surge in confidence and levels of skill [which] can be more potent than



medication". (p.7)

- The benefit of local history in general wellbeing and seeming to mitigate the prevalence of dementia has been documented in reports such as "Delivering Outcomes in the South West" by Museums, Libraries, Archives (MLA) in 2008.
- Reminiscence sessions run by Havering Museum Ltd. Constitute an important part of a broader strategy to reduce levels of Dementia in the borough.

- **Environment.**

A well maintained and conserved local historic environment contributes strongly to a visually interesting and rewarding local environment, with associated improvements in levels of mental wellbeing, physical wellbeing, a reduced propensity to low-level "enviro-crime" (tagging, vandalism at the like), and attracts people to a place.



*Restoration of gazebo in Langtons Gardens by Historic Buildings and Landscapes Officer, with the support of Friends of Langtons Gardens*

- **The economy.** The power of local history to be a catalyst to contribute to the economy of an area, whether be attracting people who then make secondary spend in the area, or by acting as a catalyst for a high-quality creative economy has been made in publications such as the 2010 English Heritage publication "The Impact of Historic Environment Regeneration", and is accepted by Havering Council in it's "Living Ambitions" policy document, Local Development Framework and Culture Strategy.

Clearly, local history - its study, conservation, restoration and interpretation - has an important social role, as well as being important for its own sake. The local authority has an important role in this matter, but in this context it is important that action is taken to ensure that local charitable organisations involved in local history, in particular those employing professional expertise in the field such as Havering Museum Ltd., are able to flourish and grow in the future, if society in Havering is not to become smaller rather than bigger in the coming years.

**2.COMMUNITIES AND PEOPLE.**

**Harold Wood**



*History way marker board, Harold Wood Park.*

2010 marked the fiftieth anniversary of the public library being built in Harold Wood. A celebration was held at the library to mark this event. The Havering List of Local Anniversaries, compiled by the Local Studies Librarian, has proved an invaluable resource in raising the profile of local history within the borough. The current list runs until the end of 2012, and it will be most beneficial to prepare another one to follow it. Planning permission has been granted for the redevelopment of the former Harold Wood Hospital site. The treatment of The Grange listed building and its immediate setting at the site could be seen as a ideal example of conservation architecture and the creative use of the inspiration of the historic environment to create an original modern response, which makes a positive contribution to the quality of the environment in general. From a conservation point of view, however, many people feel that serious questions remain about the layout of the buildings in the broader landscape of the new development here, and whether they make similarly positive use of the historic landscape to create a positive new environment. Working with the local authority, Friends of Harold Wood Park have installed a series of Oral History Waymarker boards in the park, adding to people's enjoyment of the environment, helping to encourage people to walk and take exercise, and drawing on the memories of local residents about the park and local landscape.

Cranham



*Publicity for the Exhibition on Boyd Hall.*

Sadly the former Boyd School building in Cranham was demolished by the local church which owned it in summer 2010. Many people felt that alternative, more sympathetic, solutions, blending the historic fabric of the site with the broader aspirations on the Church could have been explored more fully. An exhibition marking the 140th anniversary of the school and looking at its social impact was shown at local libraries and schools in late 2010/ early 2011. The carved portland stone plaque from Boyd Hall was kindly donated to the borough by All Saints, Cranham, and is kept in safe storage prior to a suitable site for it to be used being identified in the future.

Upminster



*Upminster Windmill Cap Works*

**Council, 21 September 2011**

2010 marked the 125th anniversary of Upminster Railway Station being opened on 1st May 1885, and the 80th anniversary of the demolition of Gaynes in 1930. Sacred Heart of Mary School have been successful in their bid to Heritage Lottery Fund for money to restore the Old Chapel in St. Mary's Lane, and are embarking on an exciting project of research and public involvement in the history of Upminster as part of this. Progress remains good at Upminster Mill, and the Trust which will take over the running of the building as part of a restoration scheme which it is hoped Heritage Lottery Fund will support have continued to make very valuable contributions to the environment of Upminster and neighbouring centres with their work at the Mill. Most notably, the sails have been put back on the Mill and the cap has now been restored to full working order for the first time in many years. Friends of Clockhouse Gardens have continued to pursue very welcome projects to open up the historic environment of the gardens to the public, working with the local authority on story telling and childrens events for local people. Work has been done to the moat and to progress the development of a rose walk at the gardens. The restoration of Parklands Bridge and Park remain an outstanding project, which it is hoped can be returned to when further funding can be identified.

Friends of Upminster Park have continued to play a proactive role in supporting the quality of the environment at the park, which forms the foreground for views of the historic environment of Upminster, including views of the windmill and Sacred Heart School, arranging fund-raising, holding events, and supporting and carrying out other work to improve the visual appeal of the park.

**Elm Park**



*Sir Keith Park*

2010 marked the 75th anniversary of the official opening of Elm Park. Working with the Council, Elm Park Regeneration organised a number of very popular local events to mark this significant date. In particular the Pasadena Roof Orchestra played a special



**Council, 21 September 2011**

concert at Elm Park Assembly Hall and an elm tree was planted in Harrow Lodge Park to mark the anniversary, and the 2010 Elm Park Fiesta was also used to mark the event.

Residents have asked whether it would be possible to commemorate the life of Air Chief Marshall Sir Keith Park in a road name in Elm Park. Air Chief Marshall Park made very complementary remarks about the role of RAF Hornchurch in the Battle of Britain, and prior to that was the very first Station Commander of RAF Hornchurch when it re-opened in 1928.

**Collier Row and Mawneys**

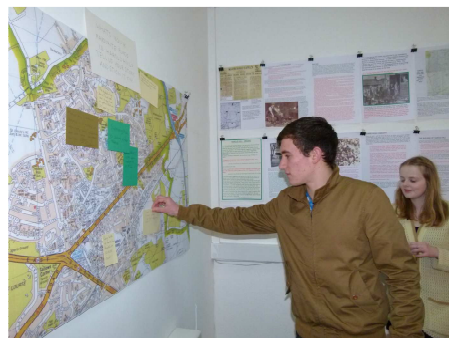


*Knight from Chaucer's Canterbury Tales*

2010 marked the 75th anniversary of the demolition of Mawneys, which it is reputed was once owned by a knight who was the inspiration for the Knight in Chaucer's Canterbury Tales. The rural and agricultural character of Collier Row and the Mawneys area until relatively recently was emphasised by the contents of the 1845 Romford and Havering Parish Tithe Map, which was acquired on long-term loan by the Local Studies Library in 2010. Documents donated to the Local Studies Library in 2010/11 include "The Great War 1914-1918; Mawneys Roll of Honour" which sheds more light on the history of the local community during this time.

Friends of King Georges Playing Fields and Friends of Lawns Park have continued to undertake practical steps to improve the visual appeal of the local environment over the last year.

**Harold Hill**



*Harold Hill residents take part in the "X-Presents" project.*

## Council, 21 September 2011

Local residents have been keen to pursue the idea of installing a plaque to mark the house in which the artist and illustrator Harry Eccleston, who did many of the design work for the illustrations on paper money in England and Wales.

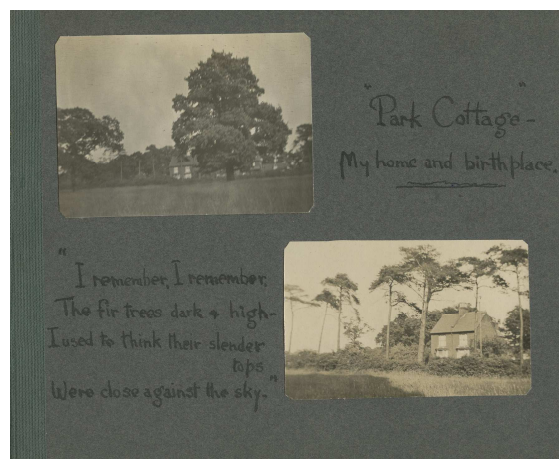
A bench marking Mr. Eccleston's contribution to life in Harold Hill has been installed in Central Park. Residents are also keen to be involved in naming new roads created as part of the regeneration of Harold Hill to ensure that they are linked to the history and environment of Harold Hill and contribute to a strong sense of community and local identity in new developments. X-Presents artists collective have been working at their base in Exchange Studios, 110 Petersfield Avenue, since February. Part of their work has been the creation of a "Museum of Everyday" using objects, images and photographs loaned by people from Harold Hill and surrounding areas. The "Museum of Everyday" gave a platform to local people to share memories and experiences. British Conservation Trust volunteers have completed an annual work programme at the scheduled moat site in Dagnam Park. A management agreement is now in place with English Heritage to deal with the regular maintenance and upkeep of this important historic site.

A local historian is working with the Local Studies Librarian on a book examining the historic landscapes of Harold Hill

The Academy of African Arts has been established by a resident in Harold Hill, promoting learning about traditional African arts and crafts and the social structures within which they exist.

Heritage Lottery Fund has funded the development of a heritage walk in Harold Hill, working with local residents and the Council.

## Emerson Park and Ardleigh Green



*Image of Park Cottage. Re-produced with permission of the Local Studies Library*

**Council, 21 September 2011**

2010 marked the 75th anniversary of Ardleigh Green School being founded. Photographs of Park Cottage in Ardleigh Green have been donated to the Local Studies Library in 2010.

### **South Hornchurch**

The landscape and buildings of Bretons Manor House are of significant importance from the point of view both of heritage and nature conservation. Work has continued throughout the year on recording and assessing the full extent of the historic and nature conservation characteristic of the landscape and buildings at this significant cultural asset for local residents and the borough as a whole.

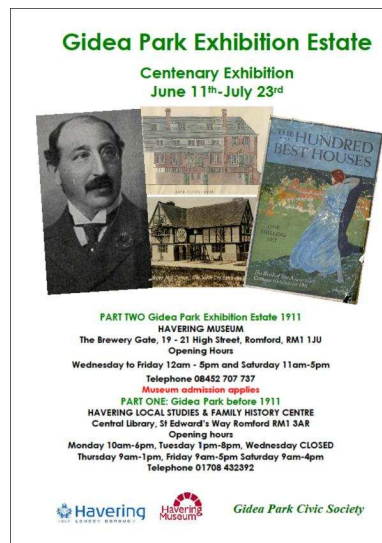
The Historic Buildings and Landscapes Officer has carried out important work to stabilise and protect the fabric of the listed manor house at Bretons. The state of the walled garden at the site continues to be of concern.



*Bretons Manor House Windows*

2011 marks the 300th anniversary of the baptism of the university teacher David Fordyce, who was appointed private chaplain to John Hopkins at Bretons in the early eighteenth century

**Gidea Park**



*Publicity for Exhibition Marking the Centenary of Romford Garden Suburb.  
Prepared by Havering Local Studies Library*

2011 marks the 100th anniversary of the completion of Romford Garden Suburb, a nationally important example of architecture and town planning with contributions by some of the leading architects of the day. Gidea Park and District Civic Society has republished an essay about the history on the estate written by the late Larry Leicester to mark the event. The publication was generously sponsored by Porter-Glenny Gidea Park Estates. An exhibition about the estate using material from the Local Studies Library and Gidea Park and District Civic Society has been held in Havering Museum and an exhibition about the landscapes of Gidea Hall and surrounding area prior to the building of the estate has been held in the Local Studies Library. The Civic Society held an event at the bandstand in Raphael Park to mark the centenary and also intend to erect interpretation boards guiding people around key buildings in the conservation area at two key points in the estate to mark its centenary. A walk around the estate, led by local historian Brian Evans, was included in this year's Havering Mini Open House to mark the anniversary.

A bid to Heritage Lottery Fund for the restoration of the historic and natural landscape at Raphael Park has been successful. Work on the restoration is scheduled to begin in early 2012. Friends of Raphael Park and Lodge Farm Park have continued to make a very positive contribution to the quality of the environment at the site, arranging fund-raising events, carrying out litter picks and planting and maintaining some of the flower beds in the park.

Heritage Lottery Fund has funded the development of a heritage walk in Gidea Park, working with local residents and the Council.

2011 also marks the fiftieth anniversary of Romford Summer Theatre producing Shakespeare in Raphael Park, an event which has been marked by the publication of a



## **Council, 21 September 2011**

history of the company by local historian Norma Jennings, which was kindly part sponsored by Havering Council. An exhibition about the history of Shakespeare productions in Raphael Park has been held at Sacred Heart of Mary School in Uppminster and subsequently transferred to the Local Studies Library in Romford.

2010 marked the probable 600th anniversary of the birth of Sir Thomas Cook, Mayor of London, who was an owner of Gidea Hall and tutor to the children of Henry VIII, it also marked the 80th anniversary of the demolition of the final Gidea Hall which succeeded the Medieval structure. 2011 also marked the centenary of the birth of Kenneth Farnes, who was a pupil at Royal Liberty School and after whom Farnes Drive in Gidea Park is named.

Squirrels Heath School marked its centenary in its current building in 2011, with a fascinating exhibition about the history of the school drawing on archive material that was exhibited at the school's annual May Fayre and then went on to be displayed at the Queen's Theatre, Hornchurch.

Gidea Park Primary School organised a treasure hunt in Raphael Park at the start of the 2010/11 school year, with prizes of the catalogues of the 1911 exhibition estate and the catalogue of the 1934 Modern Homes exhibition being donated by Gidea Park and District Civic Society and Havering Council's Parks Department.

## **Romford**

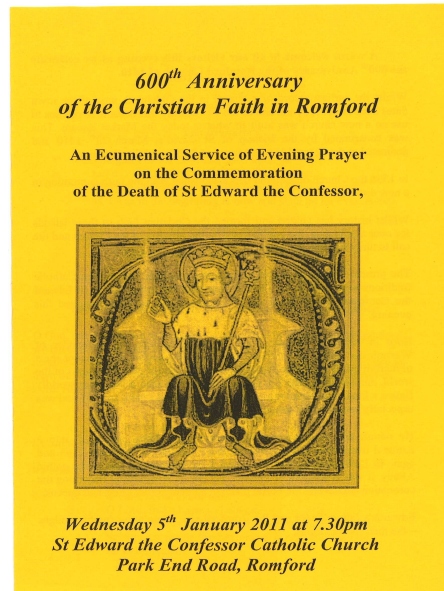
2010 was marked by major anniversaries for Romford. It was the 600th anniversary of a church first being built in the Market Place and the 300th anniversary of St. Edward's School being founded in the church.



*Service Marking the 300th Anniversary of St Edward's Schools held at Westminster Abbey.*

The Archbishop of Canterbury visited St. Edward's Church of England Primary and Secondary Schools and preached at a service of thanksgiving in St. Edward's Church in the Market to mark both occasions. A service of thanksgiving was also held at Westminster Abbey to mark both events, with very many Romford parents, pupils, teachers and former pupils and teachers of the school attending. A service was also held at St. Edward's Catholic Church, Romford, to mark the first establishment of a

church in the Market.



*Order of Service for a service marking the 600th Anniversary of there being a church in Romford Market Place held by St Edward's Catholic Church, Romford.*

Progress has been good in improving the environment of Romford Conservation Area. English Heritage and the local authority have commenced a jointly-funded environmental improvement scheme for the High Street in the area, and positive planning applications have been submitted for the conservation and restoration of The Golden Lion and The Lamb public houses, both in the Conservation Area. Planning Applications have also been refused, and refusals upheld on appeal, which would have had a negative impact on the visual appeal of the conservation area.

A full audit of the Conservation Area, and the wider town centre, has been undertaken to provide a means of informing and focussing improvements in the Conservation Area.



*Subway improvements in Romford make reference to the history of the town.*

Work continues on putting together funding for the restoration of the churchyard behind St. Edward's Church in the Market, and progress has been excellent on re-establishing links between Romford at its past and the landscape around it in the broader environment. In particular Streetcare have made welcome improvements to North Street underpass pass introducing simple stencilled motifs into the design which link the environment there to the Market and to the role of the area as an important pathway into the town for livestock on their way in to the Market in the past. Work at North Street roundabout and proposed work at London Road and Oldchurch Road roundabouts will also make a great contribution to strengthening nature corridors linking the centre of the town to the countryside around its suburbs and softening the environment of the centre of the town.

Havering Museum and the Local Studies Library have both made a very positive contribution to the Culture of the town. A full report of the work and acquisitions of the Local Studies Library, written by the Local Studies Librarian, is attached. As noted elsewhere in this report, the Museum has provided a social and cultural focus for young and old, visitors and residents over the last year, providing educational, cultural and social opportunities for a wide variety of people and a report on their work is also attached as an appendix to this report.

Edward Gotto's 1853 map of Romford was conserved while Central Library was closed for refurbishment, and is now available for researchers to use again following the re-opening of Central Library and the opening of a dedicated Local Studies Library in 2010.

Hunt and Hunt Solicitors donated a series of deeds, wills and other documents relating to Romford to the Local Studies Library in 2010, including a copy of the 1845 Romford and Havering Parish Tithe Map.

A series of photographs of Romford Brewery taken around 1971 by Howard "Bill"

## Council, 21 September 2011

Mawby were also donated to the Local Studies Library during the year.

The History Group from the Western Road Lifeskills Centre have continued to do valuable historical research with important social benefits over the year, and will shortly be opening a new exhibition.

In Cottons Park a service organised by Friends of Cottons Park and taken by the priest from St. Andrew's Church, Romford, was held to bless six sculptures installed by the Council to commemorate residents who lost their lives in the park during a bombing raid in World War II.



*The cover from the Order of Service for the Dedication Ceremony for the sculptures in Cottons Park.*

The Queen's Theatre organised dance performances giving a modern twist to traditional dance forms in The Brewery shopping centre in July 2010.

2011 marks the 200th anniversary of the Romford penny Post being established and the 100th anniversary of the establishment of Romford Special School in Malvern Road, possibly the beginning of such specialist school provision in the town. 2010 marked the 140th anniversary of the first telegraph service being installed in Romford Post Office, the 80th anniversary of the first public library being opened in Romford and the 75th anniversary of Frances Bardsley School being opened in Brentwood Road.

## Council, 21 September 2011

An exhibition to mark 80 years of public libraries in Romford was held in Central Library to coincide with the re-opening of the building by Sir Andrew Motion after its refurbishment.

A Romford Civic Society has been established, and it is hoped that this will grow into an effective lobbying organisation regarding civic amenity issues in the town.

Heritage Lottery Fund has funded the development of a heritage walk in Romford, working with residents and the Council.

## Hornchurch

Proposed improvements in Hornchurch High Street, to be funded by Transport for London, will have a very welcome positive impact on the historic environment of Hornchurch.



*Improvements to the environment in Hornchurch High Street. The palette of colours has since been changed to make a more sympathetic setting for the buildings.*

They will improve the setting of a key link between the two conservation areas in the village at Langtons and St. Andrew's Church, and will also greatly improve the streetscene around a number of buildings of local interest in the High Street, which are currently less attractive than they could be due to the poor quality of the public realm in front of them.

The recent installation of crossings and other changes to the street scene in Billet Lane in Langtons Conservation Area have been carried out with reference to best practice in the conservation of the historic environment. Road markings have been made in a less glaring colour, where possible, than in other areas, and they have been thinner. The Council's Streetcare and Regeneration Departments are to be complemented on this work, and the way in which they liaised with the Council's Culture Department, which reflects English Heritage advice on how to mitigate the negative impact of street signage and markings on conservation areas.

The Council has worked with Friends of Langtons Gardens on a number of restoration projects here over the last year. The restoration of the gazebo is continuing with the installation of new Portland stone and slate flooring.

Central doors are to be made for the structure and preparations for the restoration of



**Council, 21 September 2011**

the plunge bath in 2012 are underway.

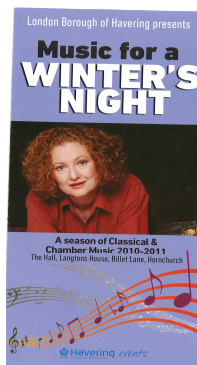
Friends of Langtons Gardens have successfully fund-raised to support Council investment in the restoration of the gardens, and have been keen helpers at Havering Mini-Open House, provided refreshments and the annual Langtons Summer Concert and held a charity pantomime to raise money for their work. They have worked in the gardens, helping to dig out and plant flowerbeds and maintain the quality of the environment.

The Council has continued to progress the restoration of Langtons House over the last year, with the restoration of Langtons Stableblock including the reinstatement of a historical colour scheme, the opening up of many of the fireplaces and refurbishment of the window frames. The 18th-century kitchen in at the house has been restored and adapted into a servery for wedding venue. A large pine table based on 18th-century designs has been built for the kitchen and a new fire surround installed on the site of the old range. A new pine dresser is to be installed in the house shortly, and lighting improvements are to be carried out.



*Authentic designs used in the furnishing of Langtons.*

Chamber concerts in Langtons Hall during the Winter months have proved very popular with local residents and have attracted major established figures and ensembles such as Emma Kirkby and London Mozart Players as well as up and coming young musicians. The concerts have also opened up the restored house to the public as a very pleasant place in which to listen to small-scale performances.



*Well attended Chamber Music concerts have attracted people to the restored historic environment of Langtons House.*

**Council, 21 September 2011**

The restoration of Fairkytes by the Council has continued in 2011. Work is currently ongoing to restore and conserve roofs, walls and windows and this popular local landmark, which is a product of building in a number of centuries. Based on a comprehensive assessment of the nature of the historic fabric of the building, the work has attracted much interest and support from local people and users of the centre.

Environmental improvements at the green by the Queen's Theatre, including the introduction of wild flower meadow areas, have improved the setting and views of grade II listed Fairkytes and helped to re-establish links between the centre of Hornchurch and the natural environment around the village. Work is beginning on the development of Conservation Area Appraisals and Conservation Area Management Plans for both Langtons and St. Andrew's Conservation Areas, which will guide future work to improve the conservation, restoration and visual appeal of these two very different areas.

Planning has begun for work to mark the 60th anniversary of the Queen's Theatre producing new work in Hornchurch in 2013. A bid to Heritage Lottery Fund to support work to capture the emotional and social role of the theatre in the life of the community in Hornchurch and beyond and to improve access to the theatre archive has been submitted.

The Asian Women's Association of Havering continue to organise their very popular Havering Mela, giving access to traditional arts, crafts and food from the Indian subcontinent in the setting of Langtons Conservation Area.

Hornchurch Festival of Arts and Heritage continues to open up new opportunities for residents to learn about the history of Hornchurch, its communities and natural environment and to attract visitors to the village each year.

The Heritage Lottery funded "Up the River and Down the Road" project run by Havering Theatre Trust at the Queen's Theatre encouraged and supported community learning about the history of Hornchurch and local communities.

Heritage Lottery Fund has funded the development of a heritage walk in Hornchurch, working with residents and the Council.

Friends of St. Andrew's Park continue to make a very positive contribution to the historic environment of Hornchurch in their work with the Council to maintain and improve the quality of this important park with its fine views of listed St. Andrew's Church, Hornchurch, and the conservation area around it.



*A fine view of St Andrew's Church, Hornchurch across one of the many meadow areas which the Council is introducing across the borough to promote nature conservation.*

2010 marked the 400th anniversary of the horns first being recorded at St. Andrew's Church, Hornchurch, the 125th anniversary of Hornchurch Station and the 75th anniversary of the present White Hart building in Hornchurch. 2011 marks the 75th anniversary of a public library first being opened in Hornchurch and the 175th anniversary of the probable date of birth of Daniel Mendoza, who fought a famous boxing match at The Dell in 1795. The minutes of the Rotary Club of Hornchurch and Upminster 1951-1983 were donated to the Local Studies Library in 2010/11.

The 70th anniversary of the Battle of Britain was commemorated by the Heritage Lottery Fund funded "Hornchurch Hullabaloo" at Hornchurch Country Park, which was an important centre for Britain's air defences during the battle. Worked by Essex Wildlife Trust continues to try to draw together funding to develop a visitor centre at the park and to progress the conservation of the historic and natural environment. 2010 also marked the 30th anniversary of the creation of Hornchurch Country Park.

### **Rainham and Wennington**

2010 saw some important local anniversaries in Rainham. It was the 300th anniversary of the Vicarage being built and the 100th anniversary of the completion of the restoration of St. Hellen and Giles Church in 1910. 2011 is the 75th anniversary of the formation of Rainham Smallholders and Horticultural Society and the 75th anniversary of a public library first being opened in Rainham.

Conservation and restoration of the historic environment of Rainham Village Conservation Area continues. Five shops have taken advantage of the joint Havering Council/ English Heritage scheme to promote the improvement of shop fronts in the area.

Plans were being developed to restore the historic facade of The Phoenix as part of this scheme, but unfortunately the owner of the property chose not to pursue a planning application in this matter.





*Original appearance of The Phoenix.*

*Image re-produced with permission of the Havering Local Studies Library*

The National Trust has progressed the restoration of the gardens at Rainham Hall in partnership with the local authority, and has also undertaken much community engagement, including with schools, as part of its work on developing a vision for the future of this historic asset for the village and the borough.



*Plan of the restoration of the gardens at Rainham Hall.*

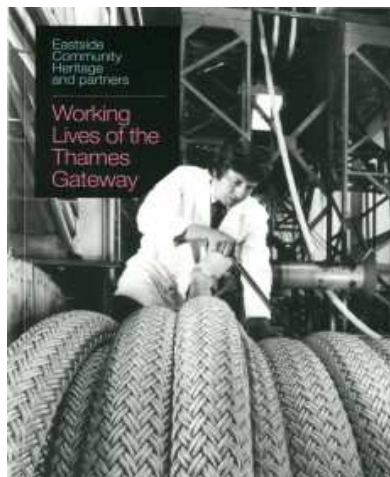
The Council awaits funding being released by London Thames Gateway Development Corporation for the building of the new library in Rainham Village Conservation Area and the positive visual impact that the building will have on views within, from and into the conservation area. Archaeological conditions associated with the planning application may well reveal more fascinating information about the social history of Rainham.



*Visualisation of the view from Rainham Village conservation area to the fine new library and residential accommodation.*

The Council has progressed work on the Rainham Marshes “Trackway” project, improving links between the village, the natural environment around it, and particularly to the Thames. The project has a particular focus on increasing awareness of the rich and varied history of the area, especially making reference to the history of causeway structures dating back to at least the Bronze Age in the area, which used to link settlements on higher ground where Rainham and Wennington are now to the Thames.

2011 has seen the completion of the Heritage Lottery funded “Working Lives of the Thames Gateway” project. The project has resulted in new archive material being gathered which sheds light on the working lives of people at a number of major Rainham businesses including Murex. Recorded interviews and transcripts of interviews with people who used to work in the area have been deposited in the Local Studies Library and form a rich source of information on the social and economic history of Rainham.



**Council, 21 September 2011**

*Publication relating to “The Working Lives of the Thames Gateway” project.*

Heritage Lottery Fund also funded the development of a heritage walk in Rainham, and the publication of a leaflet about it, by local people in 2010.

An undoubted negative development in 2010 was the most regrettable granting of permission for a major development at Dovers Corner by the Planning Inspectorate. Many people feel that were it to be built the development would have a detrimental impact on the quality of views to and from Rainham Village Conservation Area, and that it fails to make a positive contribution to the visual appeal of the area in general.

**Havering-atte-Bower**

The Historic Buildings and Landscapes Officer has progressed the restoration of the historic fabric of the green at the centre of Havering-atte-Bower Conservation Area over the year. The stocks have been restored, a new fence around the green installed and the village pond has been desilted. A new colour scheme of royal blue has been established in street furniture in the conservation area to highlight the royal associations that the village has.



*Stocks in Havering-atte-Bower restored by Havering Council's  
Historic Buildings & Landscapes Officer*

Traffic calming and new road signage have been installed in the conservation area and its surroundings. Important lessons seem to have arisen for the way in which conservation advice and road safety measures are co-ordinated to minimise visual intrusion in conservation areas as a result of this work, and it is important to firmly embed this learning in practice in the future.

Havering-atte-Bower Conservation Society continues to lobby for improvements to the fabric and visual appeal of the conservation area, and to fund raise to support work. the society also arranges events in the village to enable village residents and others to

**Council, 21 September 2011**

enjoy the historic environment to the full.

Restoration work has been ongoing at Bedfords Park, with some work being undertaken by the Council, but also traditional skills and crafts such as coppicing being employed by Essex Wildlife Trust in work at the park, and hands on conservation and restoration work being actively pursued by Friends of Bedfords Park, who also provide expert advice and support in nature conservation issues at this Local Nature Reserve.

The Council is working with Friends of Bedfords Park and the charity "Clear Village" on conservation and restoration plans for the walled garden at Bedfords Park.

2010 marked the 950th anniversary of the probable date of construction of Havering Palace and the 700th anniversary of the probable date of birth of Queen Philippa of Hainault who apparently viewed the Royal Manor of Havering-atte-Bower as one of her favourite residences.

Heritage Lottery Fund has funded the development of a heritage walk in Havering-atte-Bower, working with residents and the Council.

### **3. POLICY AND STRATEGY**

2011 saw the adoption of the Heritage Supplementary Planning Document for Havering, arising out of the Havering Local Development Framework. The document provides guidance for the implementation of the Core Strategy and Development Control Policies of the Local Development Framework and focuses on four main areas;

- Buildings - statutorily designated and buildings of local historical and/or architectural interest, including structures, curtilage buildings, setting and art work.
- Conservation Areas - including both conservation areas and other areas of special townscape or landscape character, their setting and views in to and out of them.
- Archaeology.
- Historic landscapes - including historic parks, gardens, cemeteries, local and distant views.

The document was developed in consultation with the local community, including at the Historic Environment Forum.

Draft Conservation Area Appraisals and Conservation Area Management Plans are currently being written for both the Langtons and St. Andrew's Conservation Areas in Hornchurch, which the Council adopted in 2010.

Initial work is being carried out with the community on strengthening and enhancing the list of local heritage assets contained in the Heritage SPD.

Work is being carried out to develop a Shop fronts SPD, which will have great relevance to improving the environment of conservation areas in the borough and the setting of listed buildings.

2012 will see both the History and Heritage and Libraries (including the Local Studies Library) sub-strategies of the Havering Culture Strategy being refreshed, and the same process being pursued for the Culture Strategy itself. It will be important to ensure that there are maximum linkages between all of these strategies and the Heritage SPD, and that they fully reflect the important social policy role of a strong understanding of local history within the community and the charitable, third sector and local authority infrastructure necessary to deliver this.

Nationally, Planning Policy 5: Planning for the Historic Environment, has been published by the Government and sets a new context for planning policy in the conservation of the historic environment.

The Mayor's London Plan, including policies to ensure that London's built and landscape heritage is identified, preserved and restored, was adopted in July 2011.

#### **4. RECOMMENDATIONS**

1. That the intrinsic and instrumental values of local history and the local historic environment are fully reflected in ongoing work by the local authority to develop a strategic approach to “Big Society” ideas.
2. That the new iterations of the Havering Culture Strategy and its sub-strategies in History and Heritage and Libraries maximise linkages with the Heritage SPD and fully reflect the social and cultural value of local history and the organisations working in it.
3. That work continue to improve the visual appeal of conservation areas within the borough, including effective collaboration between the Council’s Culture, Planning and Streetcare services, among others, to achieve this.
4. That links between schools and both Havering Museum and the Local Studies Library be further developed and enhanced.
5. That work be progressed to renew the Havering List of Local Anniversaries, the current version of which expires at the end of 2012.



## APPENDIX 1

### HAVERING LOCAL STUDIES & FAMILY HISTORY CENTRE 2010/2011

**Prepared by The Local History Librarian, Havering Library Service.**

Havering's Local Studies and Family History Centre opened to the public in the refurbished Central Library in July 2011. Local Studies is a long established aspect of the library service's provision and is a significant strand in the fulfilment of the Public Libraries and Museums Act. This service has been part of the Reference Library Service offered in the Central Library and its predecessor Romford Library since 1930.



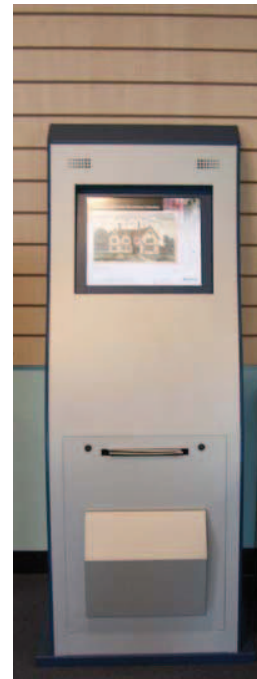
*The local artist Alfred Bennett Bamford donated a significant collection of local books, maps, prints and drawings to the Romford Library in the 1930s. This print of one of his drawings shows Marshalls House 1889. Bamford's collection is the foundation of the Local Studies and Family History Centre collection*

The refurbishment of the Central Library offered the opportunity to create a dedicated space for this service and the individuals and groups wishing to research the Havering area and their own family history.

There are two staff, a Local History Librarian and a Family History Senior Library Assistant. The service is open to the public 36 hours per week including Saturdays and one late evening.

Visitors to the library are able to browse a collection of key books about the Borough as well as a range of local history journals and an extensive collection of books dealing with specialist aspects of family history. Local newspapers back to 1866 and copies of parish registers for the area are available on microfilm. A subscription to Ancestry.com offers free access to a wide range of records of great interest to family and local historians, in particular Census returns between 1841 and 1901 and indexes to the General Registrar's record of births, marriages and deaths since 1837.

A new interactive kiosk enables visitors to view digital copies of a sample of the many historic images of the Borough in our collection. Printed copies are available for a small fee.



***One of the images available from the interactive kiosk in Local Studies. THE WHITE HART COLLIER ROW c 1910***

Appointments are available for those requiring assistance with their family history and for access to unique material relating to the history and development of Havering, including rare books, Council Minutes since 1819, Rate Books covering the period 1839 through to the 1950s, maps including Edward Gotto's 1853 map of Romford and copies of nineteenth century tithe maps for Hornchurch and Upminster as well as an extensive collection of historic illustrations.

Enquiries are accepted in person, by telephone, letter or e-mail.

In addition, Local Studies staff offer support and outreach services to groups and individuals through courses, talks, group research sessions and project work with partner organisations. The Local History Librarian assists other Council departments with information, research and copies of items and images in the Local Studies collection and contributed material for use in the Heritage features in *Living*.



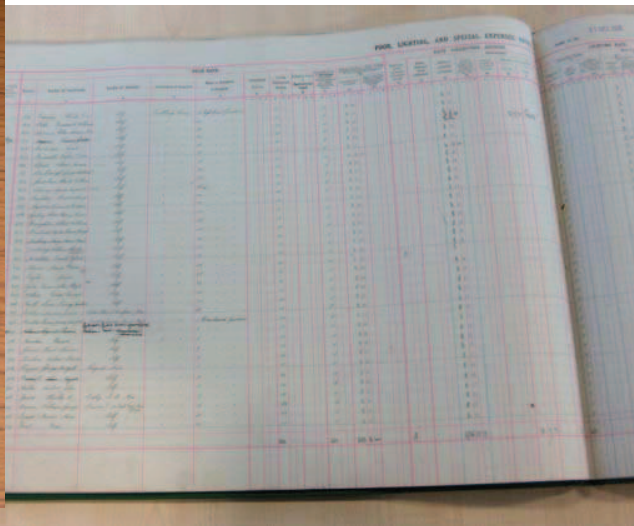
## **LOCAL STUDIES COLLECTION**

The Local Studies collection policy is to collect material about the Havering area, to organise and exploit the material and make it available to users. In addition the service is responsible for ensuring safe storage of material to serve the immediate and long term needs of users and to conserve items keeping them free from damage and possible destruction. Local Studies also serves as a repository for historic Council records e.g. minute books and rate books. The service concentrates on paper based two dimensional items e.g., books, documents, ephemera, photographs, newspapers and pamphlets. The opening of the complimentary Havering Museum which collects 3 dimensional objects has filled a gap in the collection of the Borough's history. Objects preserved by the library service were transferred to the Museum in 2010.



During the closure of the Central Library for refurbishment the opportunity was taken to conserve historic **Rate Books** and **Edward Gotto's 1853 Map of Romford** many of which were too fragile to handle. This unique material is now available to researchers and has already assisted individuals and groups with their research.

*Extract from Edward Gotto's 1853 Map of Romford showing Well Yard, which in a report written in 1851 was identified as the place where Romford's poorest inhabitants lived. This unique map was originally drawn up to improve sewage in the town and was insured for £100 at the time.*



*Upminster Rate Book 1926, pre-conservation left and afterwards right. The rebound rate books are now being used by local and family history researcher, having previously been too fragile to use.*



**Local History**  
**Librarian showing**  
**Cllr Curtin rebound**  
**rate books and the**  
**conserved Edward**  
**Gotto map.**

In 2010/11 year new books added to stock include ***Rediscovered Utopias: saving London's Suburbs*** edited ***Bridget Cherry and Ann Robey*** which includes a section devoted to the Gidea Park Exhibition Estate, ***Karen Bowman's Essex Girls*** which explores the stories of Essex women in history, including the renowned daughters of Sir Anthony Cooke of Gidea Hall. Two titles in Amberley Publishing's *Through Time* series show past and present views of the Borough, ***Hornchurch, Elm Park and Harold Wood*** by ***Brian Evans*** and ***Michael Foley's Havering Through Time*** which includes a number of images from our collection. ***50 Years of Romford Summer Theatre 1962-2011*** by Norma Jennings recounts the story of one of Havering's most vital arts groups.



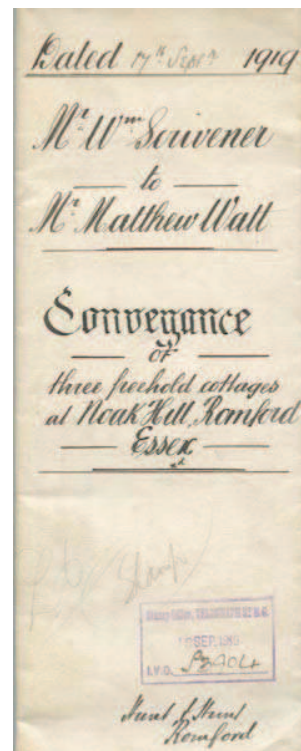
**Hornchurch ARP Wardens, one of a number of the collection images in *Michael Foley's Havering Through Time***



A number of organisations and individuals have donated items to Havering Local Studies during the 2010/2011 year. Significant highlights include

- Hunt and Hunt solicitors donated a series of deeds, wills and other documents relating to individuals and properties in Romford. Of more striking interest is their donation of a copy of **the 1845 Romford and Havering Parish Tithe Map** and the long term loan with a view to a permanent donation of the **1814 Liberty of Havering Enclosure Award** which includes unique maps.

***A conveyance to Matthew Watt of Noak Hill 1919, one of the documents donated to the collection by Hunt and Hunt Solicitors and available to researchers in the library***



- The Havering Division of the Land Tax Commission ceased in 2009 and the last Chairman, Sir Malcolm Chaplin, handed over their records of **Liberty of Havering Land Tax Assessments 1798-1818** and **Havering Division Tax Commission Minutes of Meetings 1866-2009**
- **Church of St John The Divine, Romford**, including **Priests in Charge and Vicars at St. John the Divine Romford** - Framed illuminated calligraphic chronology 1897/98 to 1997. **Book of Remembrance, St. John the Divine War Service Fellowship** - *album of Photographs (usually in uniform) of the 25 men and women of the fellowship*, **THE GREAT WAR 1914-1918 Mawneys Roll of Honour.**
- **Rotary Club of Hornchurch and Upminster Minutes of meetings and committees July 1951- May 1983**
- **Romford Brewery** - series of photographs taken c 1971 by Howard "Bill" Mawby

*Romford Brewery c 1971  
Howard "Bill" Mawby*



- Photographs of **Park Cottage in Ardleigh Green** and **Roll Of Honour album for Ernest Denham Browne** (First World War)
- **London Borough of Havering Building Control Records** – Building Control completion files 1930s – 1960s, also set of microfiche records of building control applications to c 1988 which will be available for public research on the receipt of access to digital index currently in preparation for Building Control.
- **Series of seven aerial photographic surveys of Havering** 1947-1995 received from London Borough of Havering Planning, all different dates to those already held in Local Studies.

## **EXHIBITIONS**

The Local History Librarian works on exhibitions and small displays celebrating aspects of the Borough's history and sharing the unique material and the new space available for the Local Studies and Family History Centre has enabled a number of exhibitions to be displayed since the service opened to the public in July 2010.

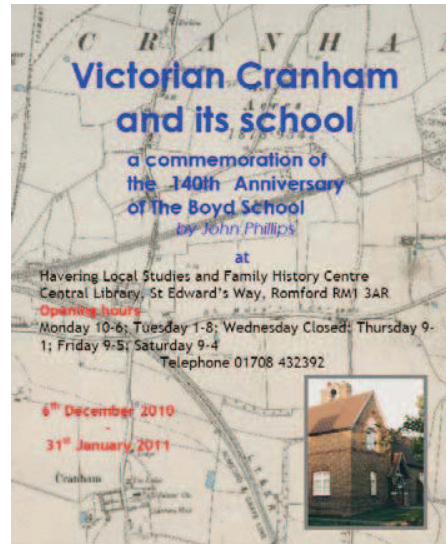
- **Elm Park 75<sup>th</sup> Anniversary Exhibition** – following the success of the display in Elm Park Library, the exhibition created by the Local History Librarian, transferred to the Central Library as the opening exhibition.
- **80 Years of Public Libraries in Romford: a collection of images** – a collection of images of Romford Library in its original guise in the Market Place and from 1965 when the present building was completed. This display was erected to tie in with the official opening of the library by Sir Andrew Motion.



*The old Romford Branch Library, formerly St Edward's School c1958*

- **300 Years St Edward's Schools 1710-2010** – a major exhibition celebrating Havering's first school by St Edward's Primary School and including images from the Local Studies collection was displayed for 3 weeks in October 2010

- **Havering's Sporting Past** – a unique collection of sporting images from the library's collection of Havering's past was displayed for the first time since Sunday 28<sup>th</sup> September 28<sup>th</sup> when it was unveiled at the The Havering Cultural Olympiad.
- **Victorian Cranham and its school: a commemoration of the 140th anniversary of the Boyd School** – Assembled by John Phillips and drawing on images and information in Havering Local Studies, The National Archives, Essex Record Office and local historian Tony Benton this exhibition brought to life Victorian Cranham and the story of The Boyd School, Cranham which met an untimely demise just before the exhibition launched.

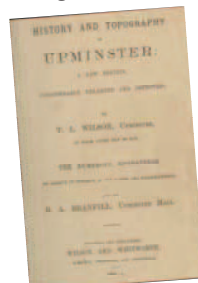
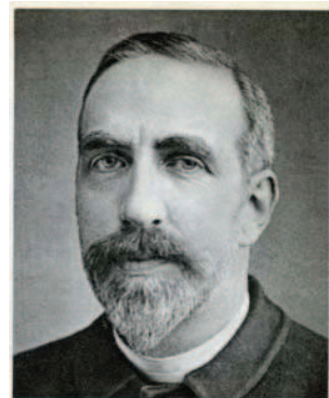


**Poster for Boyd School exhibition**



- **200 Years of Havering and the Census 1801-2001** this exhibition was created in support of the 2011 Census campaign in liaison with Havering's Census Co-Coordinator. It offers a snapshot of Havering's history through the national censuses and is illustrated with images representing all parts of the Borough in the Local Studies collection. Copies of the exhibition were displayed in the Members Room in the Town Hall and as part of the touring exhibition promoting the Census around the Borough.

**1881** Joseph Hardwick Pemberton was born in 1853. The noted rosarian was 28 in 1881 and living in his parental home The Round House in Havering-atte-Bower. He was then curate of St Edward's Church, Romford. He began his ministry in Collier Row where he conducted his first service at the schoolroom in Hainault Forest in 1880. He oversaw the opening of the mission hall and then the building of the Church of the Ascension opened in 1896



**In 1880-81 Thomas Lewis Wilson published his History and Topography of Upminster."**

The book includes engravings by B.A Branfill of Upminster Hall (Hacton House shown above). Wilson lived at America House in Upminster at the time of the 1881 Census and is described as a **"Builder and Brickmaker employing 10 men and 1 boy"**

**The North Ockendon population in 1881 was 329. The population here never rose above 340 for the whole of the nineteenth century.**

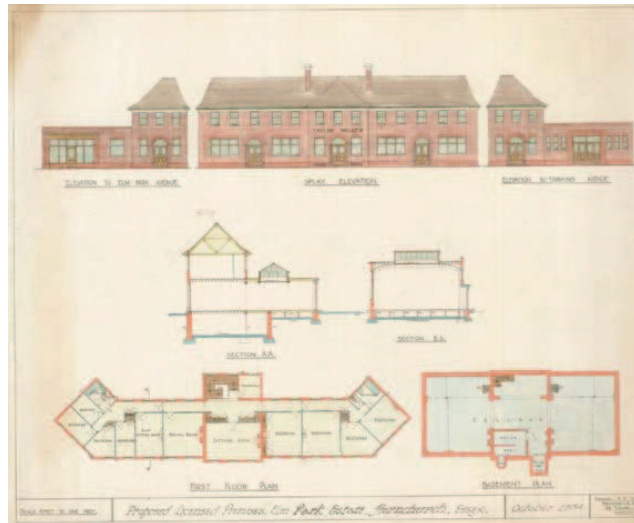
**1881 extract from 200 Years of Havering and the Census 1801-2001**



Two other major exhibitions were created by Local Studies helping communities in the Borough to celebrate significant anniversaries.

- **Elm Park 75<sup>th</sup> Anniversary Exhibition** displayed at Elm Park Library as part of the library service contribution to the Elm Park 75<sup>th</sup> Anniversary Fiesta in May 2010 proved of great interest to library visitors and formed a talking point for reminiscence sessions and the *Young at Heart Group* who meet in the library.

#### ***Plans for the Elm Park Hotel 1934***



#### ***Harold Wood Branch Library in the 1960s***

- **Harold Wood Library 50<sup>th</sup> Birthday exhibition** opened at Harold Wood Library in December 2010. This exhibition told the story of the library service in Harold Wood from its origins in a shop in the 1930s and the building of a new library opened in 1960 and the development of this much loved facility. Unique records and reports held in Local Studies as well as photographs and memories created a centrepiece for the library's birthday party.

An older exhibition, the very successful **Harold Hill 60th anniversary exhibition** formed part of the inaugural exhibition displayed at the new Exchange Studios, Harold Hill in March 2010

### **ENQUIRIES AND USERS**

Prior to the reopening of the service in the Central Library, a remote enquiry service continued from Rainham Library with enquirers receiving detailed replies to questions they would ordinarily be able to research themselves. Family History assistance was available at Upminster Library and Hornchurch Library provided access to microfilmed newspapers and parish records.

In addition to visitors carrying out their own research using the material available on the shelves in the Local Studies Room or arriving without appointments and receiving assistance, there have been in excess of 300 more appointments for more detailed specialist assistance with family history and access to unique material in our collection between July 26<sup>th</sup> 2010, when the Local Studies and Family History Centre opened to the public, and the end of March 2011. There have been over 200 microfilm reader bookings to view historic local newspapers, parish registers and other material.

Staff in the department respond to a wide range of enquiries via letter, e-mail and telephone. Typical responses to this service include

*Thanks very much for this information. This will prove a big help to my study.*

*I have received your e-mail and find the information very interesting.... I relay all information to a relation who got me interested in our family history, I hope you don't mind. ... Many thanks for all your work*

*Thank you so much for your incredibly informative email. Your time and help is very much appreciated. BBC One Show*

*Thank you very much for the picture of Harrow Lodge Library when it was Hornchurch Library. My parents married in 1950 so the dates would fit. My mother certainly recognises the picture even though it was 60 years ago as she married at 19 years old and is now 79!*

The Family History Senior Library Assistant has offered a range of courses and taster sessions for groups or individuals wishing to learn about tracing their family history. A charged for **Family History for Beginners** course lasting 12 weeks has run in the Central Library, Hornchurch Library and Upminster Library with a total of 36 people enrolled on the courses. The course introduces those attending to all aspects of family history and includes a visit to the Local Studies and Family History Centre for a session on Local History resources for family historians and an opportunity to see original archive material.

The feed back for these family history sessions, often attended by retired residents keen to develop new interests and skills, has been very positive. Typical responses include

*A well balanced, useful and enjoyable course*

*Although I circled I needed more computer time I still found the course most enjoyable and informative. I am sorry the course has finished, it could go on longer for me.*

*Jane has a wealth of experience that she readily shares, not only is the course a family history course, for me it was a local history grounding and I gained an understanding of historical events that impacted on the histories of families.*

*Thanks for the talk on Friday, everyone really enjoyed it. There are a couple of things on the feedback forms that I think are noteworthy.....There were A LOT of positive comments about the content & delivery of your talk. You must be doing something right!!*

Nine one hour workshops on using **Ancestry.com** have run in branch libraries including an extended session at Harold Hill Library in the February 2011 half term. Six talks about family history have run in branch libraries as part of the Young at Heart and Senior Moments programmes.

In April 2010 the Local History Librarian visited **Harold Wood Primary School** and gave a slideshow of historic images whilst talking about the history of Harold Wood. In March 2011, a year 4 class from **St Peter's Primary School, Romford** visited Local Studies to view and research wartime Romford using wartime bomb maps, newspapers, school logbooks, photographs and books about life in the area during the Second World War.

The opening of the **Havering Museum** in May 2010 concluded the input of the Local History Librarian as part of the Museum Project Team. Over 200 images in the display panels within the Museum are from the Library Service collection and additional images form the basis of the Museum's interactive terminals. The Local History Librarian also supported the project curator with research and the checking of historical text used in the display panels.

Tours of the Local Studies and Family History Centre have been conducted for various groups such as **Havering Humanists**. A session was run for Museum volunteers introducing them to research in libraries and archives, which was received very positively

*Thank you so much for the excellent session you ran for our volunteers last week at the library. All the participants remarked on how helpful and knowledgeable you were - and many expressed surprise and pleasure at the range of materials held in the library.*

and

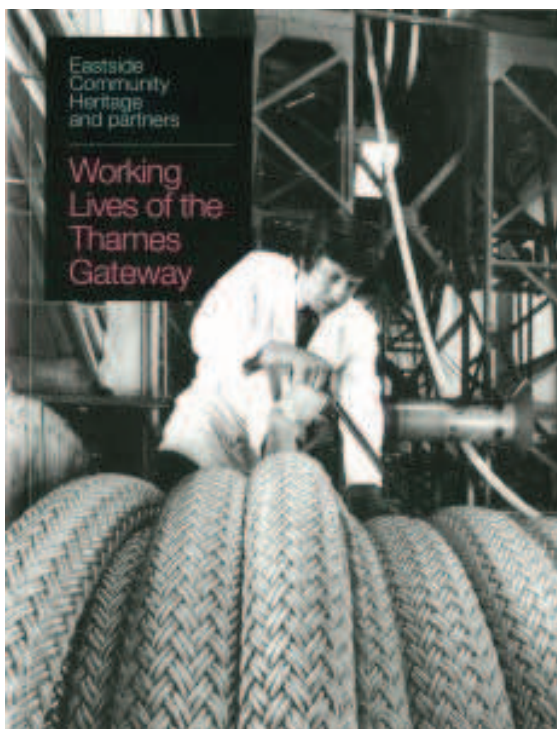
*Thanks for today. It was very interesting seeing what else you have. Up till now I have only used the newspapers. I hope to be doing some stuff relating to Havering next year so I will be in then.*

A tour of Local Studies and the opportunity to use some of the resources we have was also arranged for the Museum's Project E group for teenagers,

*All the members of Project E send their gratitude for making time for us to visit. It was extremely helpful and opened our eyes to the vast amount of resources available at the library.*

Groups and individuals from the Museum have visited regularly to carry out research since. In December 2010, the **Western Road Lifeskills Centre** visited for a tour of Local Studies and a slideshow of images **Victorian and Edwardian Romford**.





2011 concluded the 3 year Heritage Lottery Funded **Working Lives of the Thames Gateway** project, a partnership between Eastside Community Heritage and the archives and local studies libraries of six east of London Boroughs, including Havering Local Studies. The project has collected oral histories of those employed in the old industries of the area. In Havering this included the Romford Brewery, Murex, Roneo, the Harold Hill industrial estate, Romford Market and Phoenix Timber among others. Reminiscence sessions took place in libraries across the Borough and various talks, events and seminars have been organised in the region. A book has been published and an exhibition, attended by many of the interviewees, was launched at the Guildhall Art Gallery in January 2011.

Fifty recorded interviews with transcripts of people employed in Havering industries have been added to the Local Studies library. This

enabled many Havering residents to participate in the recording of their own history.

**Havering Heritage Walks** a research session was organised at Rainham Library for the volunteers involved in the first series of walks in Rainham, Romford and Havering-atte-Bower. Images from the library collection were used to illustrate the walks leaflets. The Local History Librarian gave a presentation at the Heritage Walks mini conference in March 2011 and the first of three research sessions for volunteers took place in the library later in the month. 12 people attended and were shown nineteenth century maps of the three areas, Gidea Park, Harold Hill and Hornchurch as well as books, photographs and other material.

**London's Screen Archives Digitisation.** This project, funded by the British Film Institute and UK Film Council's Screen Heritage UK programme through Film London, is preserving and making accessible London's rich archival film holdings. As part of this project, unique films held in our collection have been selected for digitisation free of charge at the East Anglian Film Archive. These films include **A Good Name: the story of one neighbourhood** made for Hornchurch Urban District Council c. 1951; **The Years Activities** (1949) made by Romford Smallholders and Romford Borough Council's film **Romford's Traffic Problems** (c 1963). When complete there will be a special screening of the films in the library.

## **APPENDIX 2**

### **An Overview of the Work of Havering Museum Ltd 2010/11**

**Prepared by Havering Council Culture, Policy and Projects Officer**

Havering Museum has had an excellent year following its formal opening in May 2010. Its volunteer programme has been a huge success, it has managed to lever in a significant amount of external funding for training and events, collections cataloguing has been underway and some fabulous loans have been secured. Aside from this, their community engagement work has been extremely popular for people of all ages.

#### *The volunteer programme*

Havering Museum has now secured 43 dedicated volunteers of all ages who work in a range of functions including Front of House, Collections Management, Exhibitions, Events, and Administration. The Front of House volunteers work in four teams of six and are coordinated by team leaders who have agreed to take on extra responsibility. In feedback volunteers have commented that they enjoy spending time at the museum and are building new social networks from their time there.

Museum volunteers have also benefited from a significant amount of training, accessed largely through MLA London, the Renaissance Hub and the East of England Hub. Courses have included first aid, giving a guided tour, pest management, low cost marketing, volunteer management and digital records preservation. Feedback has been almost universally positive:

#### **FIRST AID TRAINING**

“Attending this course has given me the confidence, which I did not have previously, to step in and deal with any emergency medical situation and do my best with the knowledge and experience gained. The more experienced students said that this was the best first aid course they had been on.”

**Front of House volunteer**

“ It was a really excellent course for a novice and gave me confidence in how to deal with an emergency if necessary”

**Front of House volunteer**

#### **GUIDED TOUR TRAINING**

“ The course gave me a valuable insight on how to conduct guided tours, especially for different groups, e.g. schools, old and young people, those with learning difficulties. It also helped me in planning and structuring a tour and giving it a different slant where necessary”

**Front of House volunteer**

#### **PEST MANAGEMENT TRAINING**

“This was a first class training session. The tutor was extremely experienced and relayed his wealth of knowledge in an easy to understand way with little in the way of technical jargon. All in all, a really good training day for any volunteer/staff member with an interest in protecting the fabric and contents of Havering Museum”

**Admin volunteer**

## **LOW COST MARKETING COURSE**

“ It was an extremely useful course and will allow me to work with other museum staff and volunteers to create plans for developing awareness of the Museum and increase visitor numbers through effective marketing”

**Marketing Volunteer**

## **VOLUNTEER MANAGEMENT**

“ It gave me good ideas on how to develop as a Team Leader and to become more effective at managing volunteers”

**Volunteer Team Leader**

## **DIGITAL RECORDS PRESERVATION**

“ The course provided an in depth awareness of current modes of record preservation in the face of data loss. The trainers made a very difficult area of work more acceptable and I am now much more aware of possible pitfalls in the storage of data/images.

**Collections Volunteer**

### *Collections Management*

Virtually everything in the museums collections (which are a combination of items from the Council's Local Studies Collection and donated items) is now on site and has been catalogued. The relationship with the Local Studies Library is in the process of being formalised. 1300 records have been created in the last year and the system is now being reviewed so that more data can be added. One volunteer has taken responsibility for working on cleaning the vast collection of blacksmiths tools that were previously held at Langtons House, while another volunteer has attended training specifically on costume and textiles and is working to conserve the items in the museum's collection. Two volunteers have taken responsibility for working at the London Archaeology and Resource Centre at the Museum of London, cataloguing the large volume of material that has been held there on behalf of the borough since the excavation of Romford Market.

The professional management of the museum has now been established on a sound footing. Collections standards and a code of ethics have been developed and approved by the Board, and the Museum is on target to get accreditation when the new standards are launched.

### *Loans*

The Museum has been fortunate enough to secure some outstanding loans from other collections this year, including items from the British Museum, the Museum of London, Colchester Museum and Valance House. The quality of these objects has been outstanding and has included a gold Roman ring from the British Museum, Saxon grave goods originally from Gerpins Farm including three wooden buckets with copper decorations and a stunning dolls house from the Museum of London, based on the design of a house in Uppminster.

The Museum has already built up positive relationships with partner organisations across the region, and Curator Liz Neathey now sits on the Museums in Essex Committee. The Museum Development Fund for Essex has supported the museum with small grants to provide a camera and costume boxes, while MLA London and the Renaissance programme have been very helpful in offering a wide range of free training for staff and volunteers.

### *Events*

Based on their Audience Development Plan, Havering Museum has established a significant programme of events aimed at reaching out to their target audiences. One of the most successful projects has been the establishment of a reminiscence programme, which allows older people in the community to come together on a weekly basis and share their memories. A different theme is given each week; so far they have included 'I remember Roneo', World War II, Markets and shops, and transport. These sessions have been very well attended, and some of the members of the group have started to build their own social networks outside of the sessions.

Family activities have been equally successful, with a series of events taking place in the school holidays, and links being established with primary schools around the borough. The February half term events in 2011 focused on ancient civilisations and were very well attended with over 40 children taking part. Funded by the BBC, the activities offered resources for participants and activities included creating jewellery or a sword story-telling and creating cave art. Other sessions have been based around World War II and war and weaponry, and activity sheets developed from these events are now available for young people visiting the museum at other times. Following the half term events, the BBC has expressed an interest in working with the Museum again and a summer session on archaeology is now planned.

A trial school programme was piloted with Parklands school and was well received. The Museum is now rolling out this programme, which is tailored to the national curriculum, to other schools in the borough.

Other activities for young people include the Havering Hedgehogs club, for 4-11 year olds, Project T for 18-21 year olds and the Havering Archaeology Youths for 14-18 year olds. Project T has a role specifically around creating youth-led exhibitions for the temporary exhibition area and are currently researching 'Victorian Havering' with this in mind.

Havering Museum Education Officer Laura Turnage has been planning for the Culture 24 programme in 2011, which involves 'Museums at Night' between the 13<sup>th</sup> and 15<sup>th</sup> May. A series of night-time ghost stories will be taking place at the museum over the weekend.

A lunchtime lecture series in October and November 2010 took place over six weeks and was over-subscribed. Another series is planned for 2011.

The Museum was also successful in gaining funding for the 'I Heart History' project, which sought to record the history of the Havering Museum project, and resulted in the creation of a number of oral histories about the development of the building.

In June 2011, the project will culminate with a triptych display created from the research undertaken over the previous year.

### *Exhibitions*

The Museum has now held several small touring exhibitions in the temporary exhibition space, including 'Up the River and Down the Road' from the Queen's Theatre, a World War I display and a display of coins from the Havering Numismatic Society. The Museum also hosted the Holocaust Memorial Trust exhibition at the end of January 2011 for Holocaust Memorial Week, and the 'Walking Proud' exhibition about LGBT history for a one day event on the 5<sup>th</sup> February.

### *Reminiscence Group*

Havering Museum has established a very successful reminiscence group which meets weekly on a Friday and is now attracting on average 30-35 people for each session. Volunteers running the sessions commented that the participants are 'really energised – when they first came in they were quite quiet. Now they actively do homework outside the group and have formed their own social networks'. The oldest person in the group is 93. The meetings have become even more important to the museum in that they have started to shape the exhibitions programme. The current theme for discussion is 'weddings', linking in with the Royal wedding on the 29<sup>th</sup> April and participants are bringing in old photos and stories of their own – these will feed into an exhibition. The group is also putting together a Christmas book of memories from 1930 to the present.

### *Quotes from the Havering Museum Visitor Book*

'Very enjoyable – evoked a lot of memories'  
'An excellent and interesting display. We learned a lot.'  
'I learn something every time I come in here'  
'Brought back happy memories – very well put together'  
'Interesting for both adults and children'  
'Beautifully displayed – fascinating to see how places used to be'  
'I love the enthusiasm of your staff – will be back'  
'What a surprise to find a picture and get information on the house where I was born in Harold Wood! A few loose ends tied up'

This page is intentionally left blank

## **CHAMPION FOR THE OVER 50's COUNCILLOR PAM LIGHT**

### **ANNUAL REPORT 2010/11**

As you will see the Over 50s Champion's report runs to several pages so I will not take up too much of your time by reading it out but I would urge you all to read it if for no other reason than to be able to direct your resident to the services and opportunities available for our senior citizens. As a Borough with approximately a third of our residents in this category we will all benefit from the information. I congratulate our efficient, imaginative and hardworking staff right across the workforce who continually advance services and update opportunities for our older residents. As Over 50s Champion I submit my report and urge this Council to accept it. Thank you.

The Council's investment in Reablement services continues to enable older people to keep their independence. Around 60% of people using the service now had no care needs after the 6 weeks of intensive and high quality support, this is up from 49% last year. This has enabled 27% more people to remain in their own homes, which is where they tell us they want to be. Funding has been secured to expand the service at Royal Jubilee Court from 13 to 26 flats by converting unwanted bedsits into high quality reablement flats.

The Council in partnership with health has secured additional funding to improve work preventing falls and to improve the experience of those with dementia. An extra £500,000 will be spent over the next two years.

A new Adult Social Care website has been developed and is currently being tested. This will be far more informative and easier to use. This will be launched in the Autumn and will represent a big step forward. The new website will be complemented by a new Advice and Information Shop on the High Street in Romford, near the former Woolworths shop. This will be independently run and will provide high quality advice on everything an older person may want to know, from 'where is my nearest keep fit class?' to 'my neighbour is struggling to cope, who can help?'. The new shop will open at the end of January.

The new and improved Telecare service is supporting more people than ever before. For £6 a week people in Havering can have 3 pieces of telecare, such as fall detectors, extreme temperature detectors or bogus caller prevention devices. Demonstration stands at this week's town show proved popular. The range of products is increasing all the time to give people more choice and improve safety.



## Council, 21 September 2011

The Carers services in Havering has been praised by the Dept of Health. The Dept of Health provided additional funding to run a Carers Roadshow, reaching out to 'hard to find' carers in Havering. Due to its success this will be repeated in future years.

The Councils Safeguarding service has been up-rated to a 'performing well' standard. This means that the inspector, the Care Quality Commission believe that people are now better protected in Havering.

A new social enterprise launched called People 4 People. This organisation matched older people with suitable care workers called personal assistants. All the personal assistants are police checked, fully trained and referenced. The project won 'Highly Commended' status at the National LGC awards and was highlighted in the Governments new 'Vision for Adult Social Care'. This gives older people more choice.

The number of people who control the funding for their social care continues to rocket. 32% of our customers with social care needs now control the care they receive. They can choose who their carer is, when they come and how the care is delivered.

Work on a new Extra care scheme has begun in Gidea Park on Squirrels Heath Road. This will provide 90 high quality apartments for older people and will ensure they have access to affordable quality care. Extra care is a great alternative to residential care, as it's cheaper for the older person and gives them more independence.

Within the Council's Culture & Leisure Services, there are many opportunities for older people. Here are some examples of the range of courses and events that have been available in the past year:

### **Libraries:-**

- 'BBC First Click' sessions recently set up in Havering are aimed at the over 50s who have never accessed computers before – it is a real "starting from scratch" course. 56 people have already attended the sessions, and we have a waiting list for additional sessions. There is a real need for these basic computer sessions in libraries that are not linked to formal education, with no exam to take, no literacy assessments and at a basic level, because many of the existing courses in the borough have requirements or constraints attached to them and attendees are saying that is why they are coming to libraries for the courses.
- Outreach talks. The Reader Development team promote the library service to many groups and organisations by visiting them and giving talks. Among these groups are a high number of Over 50s groups – for instance, retired members groups, Perky Pensioners, and Harold Wood over 60s group.
- Libraries hold a massive number of events and activities (approx. 3,000 per year), ranging from one-off author visits and speakers to ongoing sessions such as Knit and Natter groups, poetry group, creative writing classes and reading groups. These groups have a significant number of over 50s attending them and are very popular. A quarterly events calendar is published and dropped into relevant groups and organisations throughout the borough to continue to promote these opportunities.



**Sports & Physical Activity:-**

- Havering Health and Sports Development Team delivered an ongoing programme of sport and physical activity for adults, many of which proved popular with those aged 50+, including yoga, dance, armchair exercise, tai chi and healthy walks programme. The team has also worked with partner organisations such as Homes in Havering to provide activities such as chair based exercise for less mobile residents.
- In partnership with Age Concern and Romford YMCA Health and Sports Development delivered targeted 50+ sport and physical activities, including a men's walk, short mat bowls, men's football, armchair exercise and tai chi.
- Havering Health and Sports Development Team organised the 'Life Active' event which took place on 22nd May 2010 at the Queens Theatre, Hornchurch. The event was aimed at adults aged 45-60years old and during the course of the day approximately 80 people attended with 50 taking part in taster sessions including tai chi, yoga and Latin dance.
- Havering Health and Sports Development team were a key partner in the Older Peoples day event held on 1st October at the Queens Theatre. They provided taster sessions and information and advice about sport and physical activity for older people.
- Havering Health and Sports Development delivered 'Just For Him' events in partnership with Age Concern and Romford YMCA. The events helped raise awareness of a healthy lifestyle and offer sport and physical activity and social networking opportunities to men aged 50+.
- The Havering 'Walking the Way to Health' programme offers an excellent way to exercise and a large percentage of walkers are aged 50+. Over 20 volunteer walk leaders lead 6 walks a week, ranging from easy walks of 55 minutes on flat ground to more strenuous two hour walks at venues such as Hainault Forest and Bedfords Park, with over 60 walkers attending the more popular walks on a weekly basis, (the record attendance being 85!). A new programme of 30 minute 'beginner walks' is being established to cater for the older generation and less mobile, and a number of participants are already beginning to move on to the more challenging longer walks.

**Arts Development and Fairkytes Arts Centre:-**

- Fairkytes Arts Centre continues to provide its year-round programme of projects, activities and events from painting, drawing and pottery to open-air theatre and open days, including hosting a wide variety of activities staged by community and voluntary groups. For the academic year September 2010 to July 2011, adult attendances reached a higher level than ever before – in excess of 70,000 – with approx 60% of all users being from the over-50s age group.
- The Arts Service delivered the annual 60+ Artist of the Year Competition and exhibition, and 60+ Musician of the Year competition, while the Great Havering Short Story Competition includes a section for writers aged 60 and over.
- Langtons Annual Summer Concert and Langtons Winter Chamber Music Season were again very well attended, with the chamber music season in particular

## Council, 21 September 2011

attracting a total audience of 500 (predominantly from the 50+ age group) to a series of high quality performances by artists of international renown.

- The Queens Theatre continues to develop and programme material with the 50+ age group in mind, with over 45% of its 193,000 attendances in 2010/11 being from this age group

### **Parks:-**

- The Parks Service have installed new 'interpretative signage', covering topics such as local history and ecology, at a number of parks including St Andrews, Lawns Park and Harold Wood Park. They have also delivered a range of walks and talks in parks on local historical and ecological issues, both of which are particularly popular with the over 50s.
- Installation of additional benches and picnic tables to Parks across the borough.
- Installation of new outdoor gyms at Rise Park, St Andrews Park and Lawns Park, which provide a popular intergenerational activity that residents of all ages can enjoy together.
- Improved the safety of parks with the creation of the Parks Protection Team, who are now equipped with rapid response bikes, and carried out improvements to lighting at a number of parks, including Harrow Lodge Park.

The Museum continues to attract many older people to their special events especially their reminiscences of Havering past.

The Over 50s Forum goes from strength to strength with at least 100 members attending the monthly meeting even the AGM where I was honoured to be made Life Time President. Many Council Departments send speakers to update members on current regulations and future opportunities as well as the workings of the Council and how the budget and services are managed on their behalf. Outside Organisations are very willing to send speakers so that members are kept informed of current trends. We have had a number of very entertaining speakers telling us about their very interesting and varied lives. Several outings have been arranged which were well attended including a day at the RSPB site complete with afternoon tea. Future events include an evening event to Southend to see the Lights and a Fish and Chip Supper. We conclude the year with a Christmas Party at the YMCA which will include entertainment by a local older peoples choir.

The Havering Show was a great success with many people visiting the Over 50s stall in the Council's Community Marquee. The Caring Neighbour Scheme is in it's 3rd year and has increased in popularity every year. The finalists will be announced at the celebration at the end of October in the Council Chamber where all entrants will be presented with a certificate.

We work closely with Age Concern Havering who have a speaking spot at every monthly meeting. The new Chief Executive introduced himself on his arrival in Havering and then came back again to explain the reasoning behind staying as Age Concern Havering and not being part of the national charity Age UK. Age Concern is the biggest local charity dedicated to older people working with the Council providing

**Council, 21 September 2011**

services, organising events and outings as well as running clubs for a wide range of interests. They also provide befriending on several levels from visits to phonecalls.

There are many opportunities as well as help for our older residents but we are not complacent and will continue to work with our partners to improve Services and update Leisure, Culture and Educational opportunities

This page is intentionally left blank

## **CHAMPION FOR THE VOLUNTARY SECTOR COMPACT COUNCILLOR ANDREW CURTIN**

### **ANNUAL REPORT 2010/11**

I have divided this report into two sections;

1. Preventing a smaller society.
2. Recommendations.

#### **1. PREVENTING A SMALLER SOCIETY**

Major local charitable and civic organisations employing specialist staff are key to ensuring that the current period of change does not result in a smaller society, rather than the “Big Society” that the Government aspires to or the “Good Society” espoused by the Opposition in Parliament.

Crucially, if these ideals of “Big Society”/ “Good Society” - depending upon your viewpoint - are to have any meaning for daily life and the nature of society as we immediately experience it, then it will be vital for there to be a clear local picture of how such organisations are to expand and flourish, and how locally we are to facilitate that.

Inherent in ideas of a “Big Society”/ “Good Society” is a belief in locally responsive solutions. In this light it is pointless to seek an instruction from the centre as to how the concepts are to work locally, indeed it would be wholly contradictory to the aims of the ideas, but it is the duty of each local authority and community/ communities within it to establish how they are going to put in place the conditions within which the local charitable/ civic sector which employs staff is going to be able to thrive and expand.

The concept behind current political thought, certainly on behalf of the current Government, seems a clear and simple one, which may seem obvious but is, perhaps, all the more powerful for that. The argument would seem to be that since the War the debate has largely focussed on the relationship between the state and the individual and where the boundaries should lay between the two. No doubt this is an over simplification, but proponents of “Big Society” ideas at least suggest that this analysis of the way in which our common life can be divided is wrong, and that in between the state and the individual is society, made up of all the groups and organisations in which people freely come together at different levels and in different ways, and that the aim of policy should be to support that section between the state and the individual to expand and grow.

Clearly, people come together in a number of ways, all equally valuable. Sometimes people may be volunteering to help do the chores that enable a group running activities and events to thrive. Sometimes they might be fund-raising or helping with the local branch of a national charity or organisation. Both activities are clearly important, but it would seem obvious to me that if society (as defined by those who support the analysis given above) is to grow and is to become bigger as a result of this period of change, rather than perhaps somewhat introverted and inert, then it is the major local charitable organisations that employ staff which will be central to this process. Volunteering on the front line to help run activities and the like is of huge value, and very important, but on its own it will not provide the impetus for a high quality experience of life and change for the better or ensure the professional input which is often needed to ensure that vital work is properly done in all areas of life from Culture and Social Care to Health, Education and the Environment. Equally, national charities and bodies, though also carrying out vital work, will inevitably respond to a national picture, rather than the local circumstances which ideas of a “Big” or “Good” Society call upon us to respond to.

This having been said, however, the national context does create important conditions within which local solutions have to be formed. No town or borough is an island, though many eminent people in the field, such as Camila Batmanghelidjh of “Kids Company”, have expressed the view that there is a lack of clarity from government as to the frameworks within which and by which the sort of charitable organisation which I am referring to here should grow. More recently the Archbishop of Canterbury has excited much debate with a leading article in the “New Statesman” in which he commented; “I don’t think that the government’s commitment to localism and devolved power is simply a cynical walking-away from the problem. But I do think that there is confusion about the means that have to be willed in order to achieve the end.” (“New Statesman”, 13th June 2011, p.4) In a statement which would have benefited from greater scrutiny and greater debate over what he meant, he went on to say that; “The uncomfortable truth is that, while grass-roots initiatives and local mutualism are to be found flourishing in a great many places, they have been weakened by several decades of cultural fragmentation”. (“New Statesman”, 13th June 2011, p.5)

Equally, decisions by government seem to be shifting resources in favour of charitable, civic and voluntary sector organisations. In the same issue of the “New Statesman” in which the Archbishop made his comments, Iain Duncan-Smith said that his Department would be commissioning voluntary and community groups to deliver the Work Programme that it is launching, stating that almost 300 such groups “will be involved in delivery of the Work Programme, amounting to a substantial investment in the sector. This is what the ‘big society’ is all about: investing in voluntary organisations when they are the best at what they do”. (“New Statesman”. p.18) Three hundred organisations would work out at out just under one for every two Parliamentary constituencies, so clearly local knowledge about organisations being commissioned to undertake both this work and other pieces of work by the government would have a positive effect on local understanding of the resilience and character of civil society in each community.

At the same time, central government itself has published a new “Compact” between itself and the charitable organisations which it works with, which is endorsed by both the Prime Minister and the Deputy Prime Minister. Limited to the relationship of national

government to the charitable and third sector organisations which it works with, the document none-the-less makes plain some of the goals which the Government has, stating that its key aim is to achieve “a strong, diverse and independent civil society” (HM Government, Cabinet Office, “The Compact”, p.8). In his Introduction to the document, the Prime Minister writes; “getting citizens more engaged, involved and responsible for the communities around them will only be possible in partnership with the sector” [ charitable and third sector - AC] (p. 3), while the Deputy Prime Minister writes; “A flourishing civil society is fundamental to achieving the Power Shift the Coalition Government is committed to, transferring power away from central government to local communities”. (p.3)

Though local government is not mentioned by either writer - unsurprising as the “Compact” they are introducing only relates to the relationship between national government and charities - this emphasis on local circumstances brings us back to our starting point and the need for local thought on how the sort of charitable organisations which we believe is central to society becoming larger rather than smaller are going to be able to expand rather than contract and, consequently, society will become bigger rather than smaller locally. I hope that my recommendations flow reasonably logically from the preceding paragraphs.

## **2. RECOMMENDATIONS**

1. That Havering Council should carry out an audit of the existing framework within which the relationship between local government and the charitable/ third sector exists, highlighting any changes being introduced to it and their implications for local choices and local decision making with regard to the sustainability of major local charities.
2. That Havering Council establish a clear understanding of changing funding sources for the charitable and third sector, and of proposed changes, and uses this to inform its relationship with the local charitable/ third sector to be a “safe pair of hands” in ensuring that it has the resources to flourish and employ staff.
3. That Havering Council seek to establish a clear understanding of which third sector organisations central government is commissioning to work in communities in Havering, in order to inform its own judgement of the strength of the charitable sector in the borough.

This page is intentionally left blank





## **CHAMPION FOR YOUNGER PEOPLE COUNCILLOR GARRY PAIN**

### **ANNUAL REPORT 2010/11**

Over the past year it has been my pleasure to represent the Council as the member Champion for younger people.

As I have mentioned in a previous speech in this chamber, I see it as my role to promote and support as many youth based groups and organisations as possible, and as Havering has so many fantastic groups and activities available for our young people I have been very busy indeed.

Since my last report I have continued to visit youth groups like the Hornchurch Sea Cadets based in Elm Park and would like to take this opportunity to thank everyone who welcomed me on board at the Unit and made me feel so welcome.

As I carry out my duties as the Champion for younger people, I have had the privilege of meeting some of our amazing staff.

I've recently visited many of our Children's centres and it doesn't take long to realise that the reason these facilities and services provided to our residents are so successful is because of our dedicated staff and volunteers who work so hard to provide so much.

Nobody can doubt this administrations commitment to youth provision and support for our young people, in fact recently I have had the pleasure of opening a new Children's centre in South Hornchurch and I'm sure we are all looking forward to the new £4.7 million pound youth centre based in Harold Hill which will be Havering's first zero carbon building, making it the boroughs greenest building and one of the few buildings in the UK with a zero carbon rating.

Another youth group I have visited over the past year is The Havering Youth Council which is the place to be for all young aspiring politicians and the process is underway to elect Havering's first Young Leader who will work closely with the youth Council to ensure that the views and opinions of Havering's Young people are heard at the town hall. I think I can safely say that it is only a matter of time before these young politicians will be sitting in this very chamber as future Councillors and serving their local communities.

I am very happy to report that both the Queens theatre and the Havering Music School,

**Council, 21 September 2011**

which provide so much to Havering's young people, have maintained their grant this year and therefore will continue to deliver the high standard of youth provision this borough deserves.

It has always been the aim of this Conservative administration to engage young people through art, culture and sporting activities and provide the best possible opportunities to as many young people as we can.

Well I can safely say to you now over the last year as Youth Champion that aim has been delivered time and time again.

So finally, whether you are 7 to 19, you may wish to attend one of the Summer Workshops at the Queens Theatre, led by theatre professionals.

Maybe you would prefer to join in the fun at the Robert Beard Youth House, which provides a great venue for youth groups as well as catering for young people with special needs.

Or do something a bit more Challenging like taking part in the Duke of Edinburgh's award which gives all young people the chance to develop their skills for work and life and fulfil their potential to have a brighter future.

And I would just like to add that this highly recognised award is Safe in Havering's Hands.

There can be no doubt Mr Mayor of the importance this council continues to give to supporting the needs of our young people and will aspire to invest in their future.



Cllr Garry Pain  
St Andrews Ward



## MEMBERS' QUESTIONS

### 1 REVIEW OF VILLAGE GREEN LEGISLATION

#### **To the Cabinet Member for Individuals (Councillor Steven Kelly)**

By Councillor Barbara Matthews

The legislation around applying for village green status is currently under review and subject to consultation (closing 14<sup>th</sup> October 2011). Would the Cabinet Member please set out the initial position of the Council and would he also agree that a cross-party response be submitted?

### 2 GUYSFIELD DRIVE HOSTEL

#### **To the Cabinet Member for Housing (Councillor Lesley Kelly)**

By Councillor Michael Deon Burton

Following the decision of Weston Homes to abandon their monstrous plans for Dovers Corner, will the Administration also withdraw their plans for a monster sized Hostel in Guysfield Drive?

### 3 FUTURE OF COMMUNITY HALLS

#### **To the Cabinet Member for Culture, Towns & Communities (Councillor Andrew Curtin)**

By Councillor Denis Breading

Will he make a statement about the future of the Council's Community Halls?

### 4 ROMFORD LEISURE CENTRE PROPOSALS

#### **To the Leader of the Council (Councillor Michael White)**

By Councillor Clarence Barrett

In the Summer issue of the Gidea Park, Heath Park and Ardleigh Green Newsletter produced by the 'Conservative Action Team', the lead article states that RA councillors have criticised the new Leisure centre planned for Romford and are politically opposed to it. Would the Leader provide substantive evidence to back up this claim or retract the statement?

5 **COST OF CARBON TAXES**

**To the Leader of the Council (Councillor Michael White)**

By Councillor David Durant

What is the estimated cost to Havering Council of carbon taxes and does the Council Leader agree that these taxes undermine the economic recovery?

6 **NEIGHBOURHOOD RESPONSIBILITY**

**To the Cabinet Member for Community Empowerment (Councillor Robert Benham)**

By Councillor Denis O'Flynn

When will the analysis of the scheme piloted on the Briar Road Estate (and referred to in the Leader's Statement to Council on 25 May 2011) be published and consideration be given to using it as a model of how the Council can involve communities more in the management of their neighbourhoods?

7 **PLANNING APPLICATIONS: MISSED DEADLINES**

**To the Chairman of the Regulatory Services Committee (Councillor Barry Oddy)**

By Councillor Gillian Ford

Over the last three years, would the Chairman set out how many planning applications have missed the decision deadline resulting in the applicant appealing directly to the Planning Inspectorate?

8 **COSTS OF STANDARDS ENQUIRY**

**To the Cabinet Member for Community Safety (Councillor Geoff Starns)**

By Councillor Mark Logan

At the Full Council meeting in March, I requested details of the full Barrister costs in relation to the Mark Gadd Standards Board investigation. Councillor Starns said he would send me this information, but has not done so. Therefore, I repeat my request for this information.

9 **GOAL FOR LEARNING**

**To the Cabinet Member for Children & Learning (Councillor Paul Rochford)**

By Councillor Pat Murray

When will he be announcing initiatives to achieve the 'aspirational goal for learning' of "wanting our older residents to have access to first class opportunities to continue their education or learn new skills" referred to in the Leaders Statement to Council on 25 May 2011?

10 **ALLEGED BLACKLISTING OF INDIVIDUALS**

**To the Leader of the Council (Councillor Michael White)**

By Councillor Ray Morgon

On 16 July 2011, the Daily Mail ran a story stating that thousands of people involved in disagreements with council staff had their personal details stored on secret blacklists. Would the Leader of the Council confirm that no such lists exist in Havering?

11 **CCTV COVERAGE FOR RAINHAM VILLAGE**

**To the Cabinet Member for Community Safety (Councillor Geoff Starns)**

By Councillor Jeffrey Tucker

If CCTV in our High Streets is beneficial then coverage should be extended to all parts of Havering. Rainham has been excluded due to cost, but this matter can now be remedied because the GLA has allocated special funding to improve Rainham and Hornchurch High Streets. Will some of this funding now be spent on providing CCTV coverage in Rainham Village? If not, why not?

12 **COUNCIL EFFECTIVENESS**

**To the Cabinet Member for Community Safety (Councillor Geoff Starns)**

By Cllr. Paul McGearry

In the Leaders Statement to Council on 25 May 2011 he stated that your project "will consider how we can do more to put our customers-council taxpayers and their families at the heart of our decision making" what new initiatives/proposals are proposed to achieve these aims?

13 **POSSIBLE DISPOSAL OF COUNCIL-OWNED SHOPS**

**To the Cabinet Member for Housing (Councillor Lesley Kelly)**

By Cllr Ray Morgon

Given the proposed changes to the Housing Revenue Account and the need for the council to raise money and cut its costs, would the Cabinet Member confirm if there are any plans to dispose of council owned shops in the borough?

14 **IN-HOUSE MANAGEMENT OF COUNCIL HOUSING: COSTS AND SAVINGS**

**To the Cabinet Member for Housing (Councillor Lesley Kelly)**

By Councillor Jeffrey Tucker

As an estimate what are the anticipated costs and savings from bringing the management of council housing back in-house?

15 **COMMUNITY ACTION PROJECT**

**To the Cabinet Member for Culture, Towns & Communities (Councillor Andrew Curtin)**

By Councillor Keith Darvill

In the Leader's Statement to Council on 25 May 2011 he stated that the Community Action Project is "aimed squarely at achieving as much as we can through our partnerships with the voluntary and community sector and our efforts to encourage local residents to have a real stake in the future of their Borough" what new initiatives can he announce and is he yet in a position to see just how much an appetite there is in Havering for the Big Society?

16 **MEMBERS' RESIDENCES**

**To the Leader of the Council (Councillor Michael White)**

By Councillor Clarence Barrett

Would the Leader please confirm that the principal residence of all Conservative members is within the boundary of the borough?

17 **FUTURE OF NAPIER HOUSE AND NEW PLYMOUTH HOUSE TOWER BLOCKS**

**To the Cabinet Member for Housing (Councillor Lesley Kelly)**

By Councillor Michael Deon Burton

What are the Council's plans regarding the tower blocks, New Plymouth House and Napier House, located in Dunedin Road in South Hornchurch Ward?

- 1 Are they to be renovated or demolished?
2. Please provide a clear and specific time period for my residents as to when one or the other will occur.

18 **GOAL OF TOWN & COMMUNITIES**

**To the Cabinet Member for Housing (Councillor Lesley Kelly)**

By Councillor Keith Darvill

In the Leader's Statement to Council on 25 May 2011 he stated "We will encourage local people to play a more active part in shaping the places where they live" and "we will make it easier for individuals and community groups to meet their own needs locally" what initiatives are being considered to achieve these goals?

19 **SUB-LETTING OF COUNCIL PROPERTIES**

**To the Cabinet Member for Housing (Councillor Lesley Kelly)**

By Cllr Linda Van den Hende

What steps are being taken to tackle the sub-letting of Council-owned properties?

20 **PLANNING APPLICANTS' FINANCIAL SUPPORT TO POLITICAL PARTIES**

**To the Cabinet Member for Community Safety (Councillor Geoff Starns)**

By Councillor David Durant

If a planning application is submitted by someone who has made a donation or loan to a political party, should members of that political party on the Regulatory Services Committee declare an interest?

21 **ATTENDANCE AT CHILD PROTECTION CONFERENCES**

**To the Cabinet Member for Children & Learning (Councillor Paul Rochford)**

By Councillor Ray Morgon

Would the Cabinet Member advise why this Council does not allow a Member to attend a child protection conference when requested to do so by a parent who lives in the Member's ward even in just an observational capacity?

22 **ADVERTISING ON LAMP POSTS**

**To the Cabinet Member for Environment (Councillor Barry Tebbutt)**

By Councillor Linda Hawthorn

In respect of the advertising banners attached to lamp posts in Upminster, would the Cabinet Member please state how much income has been generated to date, by which advertisers and if the income target is projected to be met this financial year?

23 **BUDGET MONITORING REPORTS**

**To the Cabinet Member for Value (Councillor Roger Ramsey)**

By Councillor Clarence Barrett

Would the Cabinet Member explain why, with nearly half the 2011/12 financial year gone, no budget monitoring report has been considered by Cabinet or published anywhere in the public domain?





## COUNCIL, 21 SEPTEMBER 2011

### MOTIONS FOR DEBATE

#### A MANAGEMENT OF COUNCIL HOUSING

##### **Motion on behalf the Independent Residents' Group**

This Council supports bringing the management of council housing back in-house and will encourage tenants to support this option.

##### A1 **Amendment on behalf the Administration**

**Amend to read:**

This Council notes the support that this Administration has given Homes in Havering over a number of years and will encourage all its tenants to take part in the consultation on its future.

##### A2 **Amendment by the Labour Group**

**Delete** all of the words after “This Council supports” and **insert** the following:-

“the Administration proposal to consult with Council Tenants to seek their views on whether to continue with the current arrangement whereby the stock is managed by Homes in Havering or whether to bring this function back in house and re-integrate it into the Housing service and considers that the consultation period with Tenants should not exceed 3 months in duration”

**[Note:** if the Labour Group amendment were carried as the substantive motion, it would read:

This Council supports the Administration proposal to consult with Council Tenants to seek their views on whether to continue with the current arrangement whereby the stock is managed by Homes in Havering or whether to bring this function back in house and re-integrate it into the Housing service and considers that the consultation period with Tenants should not exceed 3 months in duration. ]

**B SOCIAL HALL BOOKINGS**

**Motion on behalf the Residents' Group**

This Council agrees that any bookings made and deposit paid for the use of Tweed Hall, New Windmill Hall or Dukes Hall are duly honoured and fully incorporated into any new management/leasing arrangements in respect of these facilities.

**B1 Amendment on behalf the Administration**

**Amend to read:**

This Council agrees that any bookings made and deposits paid for the use of Tweed Hall, New Windmill Hall or Dukes Hall are duly refunded, and the Council uses its best endeavours to help those affected.

**C COUNCIL OWNED GARAGE SITES**

**Motion on behalf the Labour Group**

This Council calls upon the Administration forthwith to review its policy of closing for sale and development its garage sites throughout the Borough.

**C1 Amendment on behalf the Administration**

**Amend to read:**

This Council supports the Administration policy on garage site disposals because it provides much needed homes for Havering tenants and deals with anti social behaviour on some of our garage sites.

**D ELDERLY PERSONS SHELTERED ACCOMMODATION**

**Motion on behalf the Labour Group**

This Council calls upon the Administration to review its policy of closing elderly persons sheltered accommodation.

**D1 Amendment on behalf the Administration**

**Amend to read:**

This Council believes that its Elderly persons sheltered accommodation policy delivers improved places to live for its senior citizen and therefore supports this Administration's drive and commitment to deliver better standards.